



**ASHWAUBENON**  
*Jaguars*

*Student/Parent  
Handbook  
2023-2024*



# *Welcome to AHS!*

<b>2391 S. Ridge Road, Green Bay, WI 54304</b> <b>Phone: (920) 492-2950; Fax: (920) 492-2912</b> <b>Attendance Line: (920) 492-2950, Option 2</b> <a href="http://www.ashwaubenon.k12.wi.us">www.ashwaubenon.k12.wi.us</a>	<b>Office Hours:</b> <b>Main Office: 7:00 a.m. – 3:15 p.m.</b> <b>Attendance Office: 7:00 a.m. – 3:15 p.m.</b> <b>Student Services: 7:00 a.m. – 3:15 p.m.</b>
---	--

**Principal:**

Dirk J. Ribbens  
[dribbens@ashwaubenonk12.org](mailto:dribbens@ashwaubenonk12.org)  
(920) 492-2950, ext. 5332

**Associate Principal/Activities Director:**

Nicholas P. Senger  
[nsenger@ashwaubenonk12.org](mailto:nsenger@ashwaubenonk12.org)  
(920) 492-2950, ext. 5333

**Associate Principal:**

Cassandra A. Schneider  
[cschneider@ashwaubenonk12.org](mailto:cschneider@ashwaubenonk12.org)  
(920) 492-2950, ext. 5334

**Mission Statement:**

The Ashwaubenon High School learning community provides a safe and caring environment that inspires all students to achieve their full potential.

**Philosophy:**

The staff of Ashwaubenon High School believes in the values of education for each student. We recognize and accept individual and cultural differences, and we believe that having a comprehensive curriculum and multiple co-curricular activities assist in educational growth. A safe and secure environment, based on principles of caring, justice and individual responsibility, is important for the successful acquisition of academic, social, emotional, physical and employability skills. These skills are necessary for our students, who enter our school as adolescents and leave us as young adults.

**Class/Bell Schedule:**

Ashwaubenon High School utilizes a modified block schedule with four 90-minute class periods conducted each day, as well as several shorter half-blocks, otherwise known as “skinnies.” When the daily schedule is adjusted due to early dismissal, late start, etc., bell schedules are used to allow each class to meet on a prorated basis.

Between first and second period on full days of school, there is a 40-minute academic focus period for all students. Most students will be scheduled into supervised study halls for work time. Other students may be scheduled into smaller groups with specific teachers to get extra, intensive help in core academic areas, based on student grades and academic need.

Most school days will run on a Standard Day Bell Schedule from 7:28 a.m. to 2:50 p.m., except for monthly 2-hour early release days to allow for staff collaboration. The early release days will be on the second Friday of each month beginning in October, with exceptions in September, February and March. Both the bell schedules and early release dates are shown below.

September 28, 2023* <i>(Packer Game Early Release at 1:15pm)</i>	January 12, 2024
October 13, 2023	February 15, 2024
November 10, 2023	March 1, 2024
December 8, 2023	April 12, 2024
	May 10, 2024



*Ashwaubenon High School*  
**STANDARD DAY  
 BELL SCHEDULE**

---

<u>Period</u>	<u>Time</u>	
1	7:28 – 8:56	
Academic Focus or ACP	9:01 – 9:41 <i>(Announcements at beginning of period)</i>	
2	9:46 – 11:15	Class A 9:46 – 10:29 Class B 10:32 – 11:15
3	11:20 – 1:17	
4	1:22 – 2:50	

*Student/Teacher Consultation Time 2:50-3:20  
(Monday, Tuesday, and Thursday)*

---

Period 3 Lunch and Class Schedule

Lunch A	11:20-11:45	Class B & C	11:48- 1:17
Lunch B	12:06-12:31	Class A	11:20-12:03
		Class C	12:34- 1:17
Lunch C	12:52- 1:17	Class A & B	11:20-12:49

3023 34 Standard Day

*Ashwaubenon High School*  
**2-HOUR EARLY RELEASE  
 BELL SCHEDULE**

---

<u>Period</u>	<u>Time</u>	
1	7:28 – 8:36	
2	8:41 – 9:49	Class A 8:41 – 9:14 Class B 9:17 – 9:49
3	9:54 – 11:02	Class A 9:54 – 10:27 Class C 10:30 – 11:02
4	11:07 – 12:15	
Lunch	12:20 – 12:50	

---

3023 31 2 Hour Early Release

# TABLE OF CONTENTS

<b>I. ATTENDANCE POLICY</b>	<b>1</b>
A. ATTENDANCE PHILOSOPHY	1
B. ATTENDANCE POLICY	1
C. RESOLVING TARDIES AND ABSENCES	2
<b>II. GENERAL INFORMATION</b>	<b>3</b>
A. ADDRESS CHANGES/STUDENT INFORMATION UPDATES	3
B. ANNOUNCEMENTS	3
C. BUILDING SECURITY/VISITORS	3
D. BUS TRANSPORTATION	3
E. CELL PHONES AND ELECTRONIC COMMUNICATION DEVICES	4
F. CO-CURRICULAR ACTIVITIES/ATHLETICS	4
G. COMMUNITY SERVICE	4
H. DRESS GUIDELINES	4
I. FIRE DRILLS/TORNADO DRILLS/LOCKDOWNS	5
J. FUNDRAISING	5
K. HEALTH SERVICES AND MEDICAL EMERGENCIES	5
L. LOCKERS	6
M. PARKING LOTS	6
N. POLICE-SCHOOL LIAISON OFFICER	7
O. POSTERS	7
P. SCHOOL-SPONSORED TRIPS	7
Q. STUDENT INSURANCE	8
R. SEVERE WEATHER/SCHOOL CLOSINGS	8
S. STUDENT RECORDS	8
T. TECHNOLOGY	8
U. TEXTBOOKS/COURSE FEES AND CLASSROOM ITEMS TO BE PURCHASED	9
<b>III. GENERAL DISCIPLINE POLICY</b>	<b>10</b>
A. ACADEMIC HONOR CODE	10
B. ALCOHOL & DRUGS	10
C. ARTICLES PROHIBITED AT SCHOOL	10
D. DETENTION	10
E. FIGHTING/PHYSICAL THREATS/ASSAULTS/DISORDERLY CONDUCT	10
F. HARASSMENT/BULLYING	11
G. STUDENT CONDUCT	11
H. STUDENT TRANSPORTATION	11
I. TOBACCO USE	12
J. UNACCEPTABLE LANGUAGE	12
K. WEAPONS	12
<b>IV. A.O.D.A. POLICY (5530)</b>	<b>12</b>
A. CONSEQUENCES FOR THE USE OF, POSSESSION OF (A) INTOXICANTS, (B) MOOD ALTERING DRUGS USED FOR PURPOSES OTHER THAN THOSE PRESCRIBED BY A PHYSICIAN, AND (C) DRUG PARAPHERNALIA	12
B. CONSEQUENCES FOR SELLING, DEALING, EXCHANGING, PURCHASING, OR GIVING AWAY INTOXICANTS OR MOOD ALTERING DRUGS AND DRUG PARAPHERNALIA	13
C. READMISSION TO SCHOOL	13

D. STUDENT ENROLLMENT IN NON-PUBLIC EDUCATION DURING THE PERIOD OF RULES ENFORCEMENT	14
E. USE OF INTOXICANTS OR MOOD ALTERING DRUGS USED FOR PURPOSES OTHER THAN THOSE PRESCRIBED BY A PHYSICIAN IN A STUDENT OWNED/OPERATED VEHICLE	14
F. ADMINISTRATIVE RULES	14
<b>V. STUDENT SERVICES OFFICE (SCHOOL COUNSELING)</b>	<b>14</b>
A. SCHOOL COUNSELORS	14
B. SCHEDULE CHANGE GUIDELINES	14
<b>VI. CURRICULUM</b>	<b>15</b>
A. GRADUATION REQUIREMENTS (28 CREDITS)	15
B. GRADING	15
C. GRADE CHANGES	15
D. REGISTRATION	16
E. COURSES ATTEMPTED A SECOND TIME	16
F. HONOR ROLL	16
G. ACADEMIC AWARDS PROGRAM	16
H. NATIONAL HONOR SOCIETY	16
I. VALEDICTORIAN AND SALUTATORIAN DETERMINATION/FINAL CLASS RANK	16
J. EARLY COLLEGE CREDIT/START COLLEGE NOW PROGRAMS	17
<b>VII. CO-CURRICULAR ACTIVITIES/ATHLETICS</b>	<b>18</b>
A. CO-CURRICULAR ACTIVITIES	19
1. Academic Games	19
2. Art Club	19
3. Battle of the Books	19
4. Bowling Team	19
5. Cheer & Stunt Mascot Team	19
6. Computer Club	19
7. Dance Team	19
8. DECA	20
9. Destination Imagination	20
10. ECO Club	20
11. Encore Show Choir	21
12. Fishing Club	21
13. Forensics Team	21
14. Formula Student USA	21
15. German Club	21
16. GSA	21
17. Jazz Band II	22
18. Math Team	22
19. Musical Program	22
20. National Honor Society	22
21. Nordic Ski Team	23
22. One-Act Play Competition	23
23. Performing Arts Club	23
24. Performing Arts Center Technical Staff	23
25. Pit Band for AHS Musical	23
26. SkillsUSA	23
27. Spanish Club	24
28. Spring Play	24

29.	<i>Sting Cancer</i>	24
30.	<i>Student Council</i>	24
31.	<i>Trap Shooting Club</i>	24
32.	<i>Yearbook Staff</i>	25
<b>B.</b>	<b>WIAA INTERSCHOLASTIC ATHLETICS</b>	<b>25</b>
1.	<i>Baseball – Boys Teams</i>	25
2.	<i>Basketball – Boys Teams</i>	25
3.	<i>Basketball – Girls Teams</i>	25
4.	<i>Cross-Country Team – Boys and Girls</i>	25
5.	<i>Football Teams</i>	25
6.	<i>Golf – Boys Team</i>	25
7.	<i>Golf – Girls Team</i>	26
8.	<i>Hockey – Boys Teams</i>	26
9.	<i>Hockey – Girls Co-op Team</i>	26
10.	<i>Soccer – Boys Teams</i>	26
11.	<i>Soccer – Girls Teams</i>	26
12.	<i>Softball – Girls Teams</i>	26
13.	<i>Swim – Boys Team</i>	26
14.	<i>Swim – Girls Team</i>	26
15.	<i>Tennis – Boys Team</i>	27
16.	<i>Tennis – Girls Team</i>	27
17.	<i>Track &amp; Field Teams</i>	27
18.	<i>Volleyball – Girls Teams</i>	27
19.	<i>Wrestling Teams</i>	27
<b>VIII.</b>	<b>PARTICIPATION REQUIREMENTS</b>	<b>27</b>
<b>A.</b>	<b>REQUIREMENTS FOR ATHLETIC PARTICIPATION</b>	<b>28</b>
1.	<i>Athletic Physical Exam Forms</i>	28
2.	<i>Insurance Coverage</i>	28
3.	<i>Co-Curricular Code of Conduct: Meeting and Online Requirements</i>	28
4.	<i>Emergency Contact Information</i>	28
5.	<i>Student Activity Fees</i>	28
6.	<i>Medical Release</i>	28
7.	<i>Transportation To And From Athletic Contests</i>	28
8.	<i>Student Responsibility For Loss Of School Time</i>	29
9.	<i>Attendance Requirement</i>	29
10.	<i>Uniforms</i>	29
11.	<i>In-Season Activity</i>	29
12.	<i>Amateur Status</i>	29
13.	<i>School Athletic Awards/Recognition</i>	29
14.	<i>Team Recognition</i>	30
15.	<i>State Tournament Appearance</i>	30
16.	<i>State Transportation</i>	30
17.	<i>Meal Money</i>	30
18.	<i>Towels</i>	30
19.	<i>Student Athletes Experiencing Financial Difficulty</i>	31
20.	<i>WIAA Eligibility Criteria</i>	31
<b>IX.</b>	<b>CO-CURRICULAR CODE OF CONDUCT</b>	<b>31</b>
<b>A.</b>	<b>INTRODUCTION</b>	<b>31</b>
<b>B.</b>	<b>PARTICIPATION REQUIREMENTS</b>	<b>32</b>

C. EXPECTATIONS	34
D. CONDUCT VIOLATIONS	36
E. OTHER CONSEQUENCES FOR VIOLATIONS	38
F. PROCEDURES	39
G. APPEALS PROCESS	39
H. CONSEQUENCES OF CODE VIOLATIONS	41

# I. ATTENDANCE POLICY

## A. ATTENDANCE PHILOSOPHY

Teachers and students benefit from regular attendance in that the learning process is not interrupted, less time is spent on make-up assignments, and students benefit from participation and interaction with others within the class. While students are always encouraged to make up work missed due to absence, good student attendance promotes successful school performance.

## B. ATTENDANCE POLICY

**(Reference 118.15 Wisconsin Compulsory School Attendance Law) School Board Policy 5200**

### 1. Definitions

#### a. Excused Absences

The only absences that are considered to be excused are those that are approved by a parent or guardian, as documented by a phone call or in writing. Such absences must fall into the following categories:

- 1) Illness
- 2) Emergency (administrative discretion)
- 3) Religious observance
- 4) Health care appointments (It is recommended that such appointments be made at times other than school hours.)
- 5) Pre-excused absence. Absences which are pre-planned must be pre-authorized by the attendance office and all classroom teachers. A parent note is required. The student must make arrangements with all teachers or collect make-up work from all teachers **prior to departure**. The student must have the Pre-excused Absence form completed correctly before this type of absence is deemed excused.

#### b. Suspensions (Reference Wis. Stats. 118.16 & 120.13(1)(b)) School Board Policy 5610

- 1) Removal of a student from the regular learning environment due to behavior which is threatening to the health, safety, physical and/or emotional well-being of students and faculty. Reasons for suspensions include but are not limited to: fighting, flagrant disrespect, vandalism, smoking, serious violation of school rules, or unlawful acts.

#### c. Unexcused Absences

- 1) Truancy: (Reference Wis. Stats. 118.15 & 118.16) School Board Policy 5200.  
Absence of all or part of one or more days during which school officials have not been notified of a legal cause of absence by the student's parent or guardian. Coursework missed due to truancy may not be allowed to be made up.
- 2) Habitual Truancy: defined as a student who is absent from school without an acceptable excuse under 118.5 of the Wis. Stats. for part or all of five (5) or more days on which school is held during a school semester. Habitual truancy may result in referral to Police School Liaison Officer and will be subject to penalties outlined in Ashwaubenon Village and/or state law.
- 3) Other: Any absence which is not approved by the administration or does not fall into the categories listed in sections (a) and (b) shall be considered to be an unexcused absence. Coursework missed due to an unexpected absence will be made up according to the discretion of the associate principal and/or instructor.

### 2. Make-Up Assignments and Examinations

#### a. Excused Absences

Students with excused absences shall be given the opportunity to make up work missed in accordance with the following guidelines:





- 1) It is the student's responsibility to contact the teacher(s) to make arrangements for making up missed work.
  - 2) Exams or tests missed shall be taken at a time and place **mutually agreed upon by the teacher and student.**
  - 3) Make-up tests will be of equal value and on the same material as the missed test. However, the make-up test may not necessarily be the same test.
  - 4) The time limitation for work and exam make-up shall be the number of days missed. Exceptions may be granted by the teacher.
  - 5) Exams and assignments which were announced prior to the student's absences may be required to be made up immediately upon the student's return.
  - 6) Students may be required to do alternative assignments in place of missed classroom activities.
- b. Unexcused Absences and Suspensions (Truancies excepted)
- Students with unexcused absences or suspensions shall be given the opportunity to make up work missed in accordance with the following guidelines:
- 1) It is the student's responsibility to contact the teacher(s) to make arrangements for making up missed work.
  - 2) Exams or tests missed shall be taken at a reasonable time and place determined by the teacher.
  - 3) Make-up tests will be of equal value and on the same material as the missed test. However, the make-up test may not necessarily be the same test.
  - 4) The time limitation for the completion of work and exams missed shall be the number of days missed.
  - 5) Exams and assignments which were announced prior to the student's absence may be required to be made up immediately upon the student's return.
  - 6) Students may be required to do alternative assignments in place of missed classroom activities.
- c. Other Considerations
- 1) **Students who are suspended are not permitted on any school property.**
  - 2) If the work is not made up within the allotted time, the student may be given a grade of zero (0) for the work missed.
  - 3) Work experience students who miss school and are unexcused or sick, may not attend their work site for that day.
  - 4) Students who are unexcused or sick may not attend or take part in extra-curricular school activities that day.
  - 5) Even though students may be 18 years old, they are still required to have parents provide the school with documentation in writing or by phone about all absences identified in section I, subsection B of this policy.

### C. RESOLVING TARDIES AND ABSENCES

1. **AHS has a closed campus.** Students are not permitted to leave school during the day or at lunch without permission from an administrator. Leaving school without permission or at lunch may result in disciplinary consequences. This may include detention, parental conference, suspension, or referral to School Police Liaison Officer. (reference Wis. Stats. 118.5:121.02) School Board Policy 5200.
2. **Tardiness**
  - a. If you are late to class – Report directly to your teacher. If you are detained by another teacher, you will be issued a hall pass from that teacher.
  - b. A student will be considered tardy if he or she is not within the confines of the classroom when the second bell rings. Teachers may deal with tardiness by detaining the student after school or writing a referral. Chronic tardiness could result in parental conference with the administration and more severe consequences.
3. **Resolving Absences**



- a. When a student will be absent from school, parents are requested to call the high school attendance office as early as it is convenient and ideally before the start of the school day. To report an absence, call the Attendance Line at (920) 492-2950, Option 2.
  - b. When a parent does not call school to report a student as absent, the student must bring a written parental excuse when returning to school or the absence will be unexcused.
  - c. For absences other than illness or medical appointment, completion of the Pre-excused Absence Form is required prior to the absence. These forms are available in the attendance office. It is essential that this form be filled out far enough in advance to allow for arrangements of make-up work.
- 4. Unexcused absences can result in disciplinary consequences.**

## **II. GENERAL INFORMATION**

### **A. ADDRESS CHANGES/STUDENT INFORMATION UPDATES**

Student information should be updated as needed by the parent/guardian in PowerSchool's E-collect Forms via their Parent Single Sign-on Account. At a minimum, information should be reviewed for accuracy at the start of each school year. It is important to have accurate information on file in the event we need to reach you in an emergency.

### **B. ANNOUNCEMENTS**

Announcements are made during the Academic Focus Period each day and are also placed on the high school website under Daily Announcements. Announcements need to be submitted to the main office a minimum of 24 hours prior to the requested run date. Students are reminded that all announcements need to be submitted by their teacher or advisor. ALL students wishing to make an announcement for a co-curricular event must have approval from the Activities Director.

### **C. BUILDING SECURITY/VISITORS**

1. For the safety of all students and staff, the building will be secured during school hours. All doors will remain locked while school is in session. All visitors entering the building must do so through the main entrance only and must sign in at the main office and receive a visitor badge. Before leaving, visitors must sign out. Portions of the building are covered by surveillance cameras.
2. Student movement in halls during classes is to be held to a minimum. Students using the halls during class time must have an appropriate teacher approved hall pass.
3. Students are not allowed to bring guests to school during regular school hours (including lunch) without prior written approval from administration.
4. Students may not have food delivered to the school building without prior administrator approval.

### **D. BUS TRANSPORTATION**

Students who are eligible for transportation board their assigned bus at designated pick-up sites and arrive at school shortly before school begins. Students are dropped off and picked up in front of school (near the office). Buses will be waiting when the bell rings at 2:50 p.m. and will leave by 2:55 p.m. Student riders are expected to exhibit good behavior at all times on school buses and at boarding points.

### **E. CELL PHONES AND ELECTRONIC COMMUNICATION DEVICES (Reference Wis. Stats. 118.258) School Board Policy 5518**

Cellphones and other electronic communication devices (ECDs) must be turned off and put away during class time and all school activities. ECDs may be used in the following limited situations:

- The teacher may allow students to use ECDs during class for specific, class-related activities.
- Such devices may be used during the regular passing periods between classes and during lunch, but only in hallways or the commons area. ECDs are not to be used in bathrooms or locker rooms.
- Ringtones must be silenced during school hours.

Violations of these expectations will result in confiscation of the item and parent conference, along with possible other sanctions.

## F. CO-CURRICULAR ACTIVITIES/ATHLETICS

Ashwaubenon High School students are encouraged to participate in the many co-curricular activity offerings available. These activities give interested students an opportunity to express themselves and to learn while working with a group of their peers. Students wishing to join any of these activities should see the advisor/coach. More information about clubs, co-curriculars and athletics is included later in this handbook.

Dances and parties may be sponsored by any school organization and provide good, chaperoned recreation for our students. The dances are open only to Ashwaubenon students unless a guest pass is obtained from the high school office and permission is granted by an administrator. Another requirement is that students must remain at the dance once they are there; students who leave the building will not be readmitted. Students and guests at school dances will submit to a breathalyzer test upon arrival.

Representing AHS on a dance court is a privilege and an honor. If nominated, students are expected to participate in all court activities, show their school spirit and pride, and be examples of excellence. Once announced as a member of a dance court, a student is not eligible for any other court for the remainder of the junior/senior year. Students may elect to remove their name from consideration. If a student chooses to remove their name, they will NOT be eligible for any other court during that academic year. Violations of the code of conduct will result in a student being removed from consideration for the dance closest to the date of the violation.

The following dances will have a court election:

### Homecoming:

- **Seniors:** Eight couples. King and Queen will be chosen from the 16 elected students.
- **Juniors:** Four couples.

### Prom:

- **Juniors only:** Eight couples. King and Queen will be chosen from the 16 elected students.

## G. COMMUNITY SERVICE

All students are required to complete 24 hours of service in our community that does not involve compensation, high school credit, or be an expectation for another AHS co-curricular activity. Service may be completed anytime during the four years of high school. Students are encouraged to go beyond the required hours, with awards presented for more than 50, 75 and 100 hours. Part of the responsibility associated with performing community service is to complete the necessary paperwork and submit it to the high school main office in a timely fashion.

## H. DRESS GUIDELINES

### **(Reference Wis. Stats. 120.13(1)) School Board Policy 5511**

Wearing certain apparel can enhance or detract from any situation. This is especially true in an educational setting which requires much concentration and self-discipline. A student's dress, like their conduct, is a personal matter limited only by the realities of health, safety, guidance or disruption of normal school operation. Within the guideline, the following types of apparel will be considered and dealt with as inappropriate:

1. Any clothing with writing or pictures which is suggestive, obscene or distasteful.

2. Any clothing with writing or pictures which enhance the image, or, through direct appeal, promotes the use or consumption of drugs, tobacco and alcohol.
3. See-through clothing or any apparel that does not cover the entire midriff area or does not cover undergarments. Habitual violation of this policy may result in parental conference and disciplinary consequences.
4. Going barefoot or stocking feet.
5. Wearing of hoods; students must be identifiable/recognizable at all times. Outdoor attire (jackets, hats, etc.) is not permitted in school or in the classroom and must be removed upon entering the building. Hats must be removed and placed in student lockers at the start of the school day. Hats may not be present in the hallways, the commons during lunch, or carried from class to class during the day. Habitual violation of this expectation may result in confiscation of the hat, disciplinary consequences, and parental conferences.
6. Clothes must be in good repair. Pants must be worn at the upper hip level and be free of chains. This would include any clothing articles/attachments that would fall outside the guidelines of what is appropriate for school dress.
7. Clothing or paraphernalia with gang "colors," emblems, insignias, symbols or gang identification or reference are not allowed to be worn on school property or brought onto school property.



#### I. FIRE DRILLS/TORNADO DRILLS/LOCKDOWNS

Fire and tornado drills are necessary for the safety of all. Specific information for these drills is posted in each room and throughout the building and will be explained by teachers. Procedures for emergency lockdown or evacuation will also be explained by teachers. These procedures have been developed to prepare students and staff in the event of emergencies such as chemical spills in the community, serious accidents in the community affecting school operations, bomb threats, intruders, etc.

#### J. FUNDRAISING

All fundraising activities must have prior approval from the Activities Director. School organizations that would like to sponsor a fundraiser must secure an application from the Activities Desk in the main office. Individual students are not permitted to sell items to raise money for personal gain.

#### K. HEALTH SERVICES AND MEDICAL EMERGENCIES

##### (Reference Wis. Stats. 118.29) School Board Policy 5330

1. **Injury/Illness** – Students incurring an injury or illness while in school or participating in a school-related activity must inform the teacher in charge immediately. After getting a pass from their classroom teacher – unless it is an emergency – the student should report to the main office. The office will contact the parent/guardian to inform them of the situation. If the student is too ill to remain in school, they may be released only to their parent/guardian or an adult designated by their parent/guardian. If this procedure is not followed, the absence will be considered unexcused. **Students are not to leave the building without permission from the main office!**
2. **Medication** – In compliance with state law and school board policy, all medication, including aspirin, cough medicine, etc. which students are to take during the school day must be kept in the school office. Students may not take any prescription or over-the-counter medication on their own. They will be allowed to consume medication only in the school office. The only exception to this policy is for inhaler and epinephrine medication, and only under certain circumstances (see below). In compliance with School Board Policy and State Law 118.29, the following procedure must be adhered to concerning prescribed medication:
  - a. Parent/Guardian Medication Request Form must be filled out and signed by parent or guardian for all prescription and non-prescription medication (This must be renewed annually or if there is any change). Medication forms can be found at <https://www.ashwaubenon.k12.wi.us/district/health-related-information.cfm>.

- b. Healthcare Provider’s Request for Medication Administration Form must be filled out and signed by the prescribing provider for all prescription medication (This must be renewed annually or at any time the medication or dosage changes). A nonprescription (over-the-counter) drug product can be administered to a student in a dosage other than the recommended therapeutic dose **only** if the request to do so is accompanied by written approval of the student’s health care practitioner.
- c. All medication must be in its original container and have the child’s full name, name of drug and dosage, time and quantity to be given, and the physician’s name clearly printed on the container in language understandable to the layperson.
- d. The child will go to the office at the specified time to receive their medication.
- e. An accurate Medication Record will be established and maintained by office personnel.
- f. According to State Laws 118.291 and 118.292, a pupil may possess and use a metered dose inhaler while in school or epinephrine auto-injector while in school, at a school-sponsored activity or under the supervision of a school authority if all the following are true:
  - 1) The pupil uses the inhaler for exercise to prevent the onset of asthmatic symptoms or uses the inhaler to alleviate asthmatic symptoms.
  - 2) The pupil has the written approval of the pupil’s physician and, if the pupil is a minor, the written approval of the pupil’s parent or guardian.
  - 3) The pupil has provided the school principal with a copy of the approval.
  - 4) The pupil uses the epinephrine auto-injector to prevent the onset or alleviate the symptoms of an emergency situation.
  - 5) The pupil has the written approval of the pupil’s physician and, if the pupil is a minor, the written approval of the pupil’s parent or guardian.
  - 6) The pupil has provided the school nurse with a copy of the approval.

## L. LOCKERS

### (Reference Wis. Stats. 118.325) School Board Policy 5771

The school provides a student locker for the convenience of the student. Some lockers have built-in combination locks. Students assigned to those lockers will be issued a locker number and combination. Other lockers use combination padlocks. Students assigned to these lockers will be required to purchase a school-issued combination lock to be used for the duration of their high school career at AHS. Upon graduation or otherwise leaving Ashwaubenon High School, this lock will become property of the student. Students may only use school-issued locks on lockers. At no time does Ashwaubenon High School relinquish its control of lockers. School administrators can conduct inspections of lockers at any time without notice, student consent or without a search warrant.

## M. PARKING LOTS

Designated parking lots are provided for students; however, parking is limited and students will be required to purchase a parking permit in order to use these lots. Parking permits cost \$50.00 for the full school year, and are prorated each quarter. All outstanding school fees and fines must be paid before a parking permit may be purchased. Payment must be made prior to receiving the parking permit.

### 1. Permit Application Procedures

- a. Applicants must possess a valid driver’s license. Parents/guardians must complete the Annual Permissions & Agreement screen in PowerSchool, including the driver and vehicle license information when applying for a permit.
- b. Permits will be processed on a first come, first served basis.
- c. A parent/guardian must verify that each vehicle described on the driver and vehicle license screen in PowerSchool is properly insured to cover property damage and bodily injury.



- d. Parent/guardian must verify the understanding that neither Ashwaubenon High School nor the Ashwaubenon School District is responsible for property which is lost, stolen, or damaged while in school parking lots.
- e. Lost, stolen or damaged permit tags will be replaced at the cost of the tag.
- f. School administrators can conduct inspections of vehicles at any time without notice, student consent or without a search warrant.

**2. Permit Use and Display**

Parking permit hang tags must be located on the inside rearview mirror with the permit number visible from outside the vehicle. Vehicles without a permit displayed, displaying an unauthorized tag, or parked illegally will be subject to a parking fine and/or towing fee.

**3. Lot Use**

Excessive speed or noise, including engines, tires, music, etc., as well as reckless driving will not be tolerated and may result in disciplinary consequences that could include a period of permit revocation. Cars without a permit are not to enter or park in any of the parking lots. Drivers will be subject to school disciplinary procedures and may be referred to Ashwaubenon Public Safety.

**4. Parking Revocation**

The parking permit will be subject to revocation if the student is:

- Violating school rules
- Habitually tardy or truant
- Creating a safety hazard

**N. POLICE-SCHOOL LIAISON OFFICER**

The Ashwaubenon School District and the Ashwaubenon Public Safety Department have employed a full-time police-school liaison officer to work in all of our district schools. This officer is also a certified emergency medical technician and a certified firefighter.

Although this officer works in all of our schools, they do maintain an office at Ashwaubenon High School. The liaison officer's hours will vary because of each school's needs. If any student or parent wishes to contact this officer, they may reach them by using our voicemail system. Their extension number at AHS is 5315. In cases of emergency, our office staff can reach them on their cellphone.

**O. POSTERS**

Posters must be approved by and receive authorized signature from the Activities Director prior to displaying them. All posters must be displayed in approved areas only.

**P. SCHOOL-SPONSORED TRIPS**

Some courses offer the opportunity for school-sponsored trips. Students will be issued permission forms and information sheets from teachers. The same rules of conduct, dress guidelines, AODA, etc., that are used at our school will apply when you are on a school-sponsored trip. Students riding on a bus to a school event or field trip will ride back on the bus unless the parents have made other arrangements with the principal prior to departure.

**School-Sponsored Trips (Including Foreign Trips)**

School-sponsored trips and trips abroad are an important part of the high school experience, and are considered extensions of the classroom experience. School expectations of behavior, attendance, participation and acceptable/unacceptable activities remain in place. Students who sign up for a trip abroad (including, but not limited to GAPP and Spanish trips) must be in good academic and behavioral standing. In addition to behavior expectations during the trip, the following expectations apply to students planning to participate.

- Students must pass all courses and have a minimum 1.5 GPA for the most recent three quarters prior to the trip, including the current term if the trip takes place during the school year.
- A student may not have any co-curricular code violation or any school offenses rising to the level of suspension during the school year of the trip abroad.

- For students who lose eligibility due to either of the above, any deposits made after the non-refundable dates will be lost.
- For all students planning to travel, fundraised money is not the property of the student or family. It is used to offset the cost of a trip, but is not refundable. Fundraised money not used for any reason may be transferred to a sibling's school fundraising activities, or the money will remain within that program.
- Students must demonstrate acceptable school attendance per Administrator and teacher/advisor expectations. Poor attendance, tardiness, and/or trancies may result in removal from a trip. Students may not be eligible for refunds if removed for attendance issues.

## Q. STUDENT INSURANCE

The School District does not furnish accident insurance covering student injuries received in class or activity participation. Parents are responsible for carrying insurance coverage on their students.

## R. SEVERE WEATHER/SCHOOL CLOSINGS

### 1. Severe Weather Closings

When Ashwaubenon schools are closed due to severe weather, an announcement will be made on most local radio and television stations. In addition, parents/guardians will be informed via the district's SchoolMessenger Rapid Notification System. If school is open during stormy weather, parents have the right and responsibility to decide whether their children can safely attend school.

### 2. Emergency School Closing Plan

If it becomes necessary to close school after the start of the school day before regular dismissal time, the announcement will be made on local radio and television stations. In addition, parents/guardians will be informed via the district's SchoolMessenger Rapid Notification System.

### 3. Snow Day Make-ups

If it is necessary to close schools for severe weather more than the two days allotted in the district calendar, make-up days will typically be scheduled starting the day after the last regularly scheduled day of school in June. If this becomes necessary, information will be communicated to families via SchoolMessenger and high school newsletters.

## S. STUDENT RECORDS

The Ashwaubenon School District shall maintain individual student records to assist certified district personnel in providing an appropriate educational program for each student. This record is to be filed at the school designated as the pupil's home school or school of attendance and maintained by the principal or their designee. The record is also maintained in compliance with Wisconsin School Law – Section 118.125, and Federal Law – 93-380 – Educational Amendment, Title V, Sections 438, 439, 440, 513, 514, and 515. Please refer to Board Policy 8330 for further information regarding the Student Records Policy. **Note: Non-custodial parents have equal rights to receive progress records and obtain other records for their child.**

## T. TECHNOLOGY

### 1. Expectations

Technology is the property of the Ashwaubenon School District and is provided for students and staff to help achieve excellence in education and provide 21<sup>st</sup> Century access to information. Technology includes computer hardware and software, phone and voicemail systems, audio/video equipment, networks and network access, telecommunications and related services. Technology also includes district-owned devices that are assigned to students or rented by students for a school year or other period of time.

Access is a privilege, not a right. Access entails responsibility. Users (students, staff, minors, adults) are responsible for their behavior and communications while using all district technology; it is presumed that users will comply with district standards.



Use of technology for non-school related purposes may occur, but only to a reasonable degree. Personal use must not negatively impact the learning environment. All users must be aware that personal privacy is not, and cannot be, guaranteed. It is impossible to completely define unacceptable use, however, for the purpose of illustration, some examples are:

Bypassing district filters and security measures; using unauthorized hardware or software with school equipment; sending or displaying offensive messages or pictures; using offensive or obscene language; downloading, playing or distributing computer games; harassing, insulting, threatening or attacking others, including racial or sexual slurs; damaging equipment or networks; violating copyright laws; using other's passwords; trespassing in other's folders, work or files; unauthorized access such as hacking; intentionally wasting limited resources; regularly employing the technology for commercial, political or religious purposes. Users are responsible for reporting occurrences of unacceptable use. (Reference Wis. Stats. 118.32, 118.324, 120.13(1)) School Board Policy 7540.03, 5513.

## **2. Consequences**

- a. Violations may result in a loss of access, files and/or school assigned devices.
- b. Additional disciplinary action may be determined at the building and/or district level in line with existing practice regarding inappropriate behavior.
- c. When applicable, law enforcement agencies may be involved.

## **3. Internet Safety - CIPA (Children's Internet Protection Act) Compliance**

It is the policy of the Ashwaubenon School District to make a good faith effort to (a) prevent user (student, staff, minors, adults) access over its computer network to, or transmission of, inappropriate material via Internet, electronic mail, or other forms of direct electronic communications; (b) prevent unauthorized access and other unlawful online activity; (c) prevent unauthorized online disclosure, use, or dissemination of personal identification information of minors; and (d) comply with the Children's Internet Protection Act [Pub.L. No. 106-554 and 47 US 254(h)]. Internet usage will be monitored and implemented per Board Policy, State and Federal Statutes. The following categories are subject to regulation via the above policies:

- Access to Inappropriate Material
- Supervision and Monitoring
- Inappropriate Network Usage
- Key terms as defined in the Children's Internet Protection Act

## **4. Library/Media Center/Computer Labs**

Students are encouraged to use the Library/Media Center for quiet study, reference work, recreational reading, and computer use. The LMC is open from 7:00 a.m. to 3:30 p.m. and the library media staff is always available to assist students. Students who display disruptive behavior or violate the District's "Internet Safety & Responsible Use of Technology Policy" may lose their privilege to use the LMC for an extended period of time.

## **U. TEXTBOOKS/COURSE FEES AND CLASSROOM ITEMS TO BE PURCHASED**

The Ashwaubenon School District requires an annual \$50 textbook/supply fee for each high school student. In addition, some courses require the payment of fees or the purchase of materials used in project-based courses, such as art supplies, safety glasses, fabric, etc. Instructors of these courses will inform students of any related course fees or materials needed. Students who damage school equipment or property will be responsible for the cost of replacement or repair of that property. Similarly, textbooks are issued to each student and a record is kept of the condition of the books when they are checked out. If a book is lost or damaged, students will be required to reimburse the school for the cost.



### III. GENERAL DISCIPLINE POLICY

Each student is entitled to attend school in a safe and orderly fashion. To ensure this, students are hereby made aware of the following regulations.

#### A. ACADEMIC HONOR CODE

Academic honesty and integrity are central to a meaningful education and to a student's ethical development. Because of this, academic dishonesty will not be tolerated or excused at Ashwaubenon High School.

The Academic Honor Code applies to all work done for credit. Definitions of academic dishonesty include, but are not limited to the following:

- Cheating
- Plagiarism
- Allowing/helping another to do any of the above
- Fraudulent use of internet materials
- Fabrication of facts/sources

AHS teachers have the authority to enforce the following academic sanctions for any violation of the honor code:

- 1st:** Failure on test/assignment, referral written, parents are notified.
- 2nd:** Failure on test/assignment, referral written, parents notified, conference with associate principal or designee, and grade sanctions.
- 3rd:** Failure on test/assignment, referral written, parent and student conference with principal or designee, and possible removal from class with failure.

#### B. ALCOHOL & DRUGS

##### **(Reference School Board Policy 5530)**

Any student of the Ashwaubenon Schools using, in possession of, distributing, or under the influence of intoxicants or mood-altering drugs not prescribed by a physician, or in possession of related drug paraphernalia at any time (24 hours per day – 365 days per year) on school premises or at a school related activity shall automatically be subject to the AODA policy and procedures (5530).

#### C. ARTICLES PROHIBITED AT SCHOOL

Items which students will not be allowed to possess include toy guns, water pistols, radios, tape recorders, speakers for electronic communication devices, tobacco products, lighters, matches, laser pointers, firecrackers, or any other object or device by its application or display that is likely to distract or cause a disturbance. Such items will be confiscated. All searches of cars, backpacks, lockers or persons will be in compliance with board policy (5771) (reference Wis. Stats. 118.325, 948.50).

#### D. DETENTION

Assigning detention is a disciplinary measure which is used with discretion. There are times, however, when the detention of a student is the most appropriate or only form of discipline.

Detention is held under the supervision and direction of the associate principal or school designee.

Students who are truant from assigned detention will be warned and may be given additional detentions if this behavior persists. Habitual truancy from detention will result in a parent conference and could result in suspension from school.

#### E. FIGHTING/PHYSICAL THREATS/ASSAULTS/DISORDERLY CONDUCT

##### **(Reference Wis. Stats. 940, 941.30, 947.01, 947.013) School Board Policy 5500 & 5520**

Fighting on school property is strictly forbidden. Fighting on school property will result in automatic suspension, possible expulsion, detention, parental conferences and referral to the Ashwaubenon Public Safety Department.

Physical threats or assaults toward a student, a district employee or a visitor by a student are strictly forbidden. All such threats/assaults will be reported immediately to the building administration. Such incidents may be reported by the administration to the Ashwaubenon Public Safety Department when appropriate.

Physical threats/assaults on a student, a staff member or a visitor may be subject to disciplinary action, possible suspension and/or expulsion.

All violations of this policy may be subject to existing Village of Ashwaubenon and/or state laws.

#### **F. HARASSMENT/BULLYING**

**(Reference Wis. Stats. 118.13, 118.46, Title VII, Civil Rights Act of 1964, Title IX, Educational Amendments of 1972, Title VI, Civil Rights Act of 1973) School Board Policy 5500, 5516, 5517 & 5517.01**

It is the policy of the Ashwaubenon School District to maintain an educational environment free from all forms of harassment and bullying and to insist that all students, staff and visitors are treated with dignity, respect and courtesy.

Harassment is prohibited to provide a safe, positive learning and work environment for everyone.

Harassment or bullying means behavior towards persons which substantially interferes with performance or creates an intermediating, hostile or offensive school environment. Such behavior may include, but is not limited to, sexual, physical, verbal and cyber activities.

Anyone who believes that any student or anyone has violated the prohibition of harassment or bullying may bring forward a complaint to the building principal or any staff member. A defined procedure has been established to handle such complaints. Individuals are encouraged to discuss what behaviors are offensive to them with school personnel.

#### **G. STUDENT CONDUCT**

**(Reference Wis. Stats, 118.13, 120.13(1), 120.44) School Board Policy 5500 & 5520**

The school building and materials within are public and private property. Students must respect their use. Restitution and/or disciplinary measures will result from evidence of vandalism.

**The following acts are unacceptable:**

1. Eating or drinking in the classroom without prior administrator permission.
2. Rough behavior or running in the building.
3. Loitering in the bathrooms.
4. Misconduct on school bus.
5. Inappropriate display of affection.
6. Anything that is disruptive to the learning atmosphere and /or safety of others.
7. Insubordination.

#### **H. STUDENT TRANSPORTATION**

**(Reference Wis. Stats. 120.13(1), 121.52(1))**

Riding a school bus is a privilege rather than a right. The time when students are riding the school bus is legally considered part of the school day. Buses may or may not have surveillance cameras. Students with repeated or serious misconduct will be subject to losing their bus riding privilege as determined by School District Policy 5500.01.

1. **First offense** – the school official will inform the parent or guardian of the offense and discuss what disciplinary measures the parent or guardian and school official deem necessary to correct the situation.
2. **Second offense** – the school official will inform the parent or guardian of the offense and the student will be denied transportation for five school days.
3. **Third offense** – the school official will inform the parent or guardian of the offense and the student will be denied transportation for thirty school days.
4. **Any subsequent offense** will result in denial of transportation.



**I. TOBACCO USE**

**(Reference Village Ordinance #9.17) School Board Policy 5512**

State law prohibits students using and possessing any form of tobacco, including e-cigarettes or vaporizers, while on school property or at a school function. Students in violation will be subject to school disciplinary measures: loss of item, suspension, detention and/or subject to prosecution under Board Policy 5512 and Village Ordinances #9.17 and 9.32.

**J. UNACCEPTABLE LANGUAGE**

Students have the freedom to use oral language to express themselves except in cases when the expressions are threats of physical assault on students or staff members or the use of obscene, vulgar language which infringes on the rights of others or substantially interferes with the educational climate.

**K. WEAPONS**

**(Reference Wis. Stats. 120.13(1)(bm), 120.13(2)(bm), & 120.13(2)(g)) School Board Policy 5772**

The Board of Education prohibits students from possessing, storing, making, or using a weapon in any setting that is under the control and supervision of the District for the purpose of school activities approved and authorized by the District including, but not limited to, property leased, owned, or contracted for by the District, a school-sponsored event, or in a District vehicle without the permission of the Superintendent. The term “weapon” means any object which, in the manner in which it is used, is intended to be used, or is represented, is capable of inflicting serious bodily harm or property damage, as well as endangering the health and safety of persons. Weapons include, but are not limited to, firearms (including, but not limited to, firearms as defined in 18 U.S.C. 921(a)(3)), guns of any type whatsoever, including air and gas-powered guns (whether loaded or unloaded), knives, razors, clubs, electric weapons, metallic knuckles, martial arts weapons, ammunition, and explosives.

The Superintendent will refer any student who violates this policy to the student’s parents or guardians and to the criminal justice or juvenile delinquency system. The student may also be subject to disciplinary action, up to and including expulsion.

**IV. A.O.D.A. POLICY (5530)**

The Board of Education recognizes the need to maintain a safe, healthy, drug and alcohol-free environment for all students. Student chemical use impairs healthy physical, mental, intellectual, and emotional development and interferes with the learning process.

**A. CONSEQUENCES FOR THE USE OF, POSSESSION OF (A) INTOXICANTS, (B) MOOD ALTERING DRUGS USED FOR PURPOSES OTHER THAN THOSE PRESCRIBED BY A PHYSICIAN, AND (C) DRUG PARAPHERNALIA**

Any student of the Ashwaubenon Schools using, in possession of, or under the influence of intoxicants or mood-altering drugs used for purposes other than those prescribed by a physician, or in possession of related drug paraphernalia at any time (24 hours per day – 365 days per year) on school premises or at a school related activity will be subject to the following:

**1. First Violation**

Any student found to be in violation of this policy for the first time during their tenure in the Ashwaubenon Schools will receive an automatic three (3) day suspension. In addition, the student and/or their parents will be required and their parents may be requested to seek counseling and provide written evidence of this counseling to the Superintendent within one (1) month of the first day of suspension. Acceptable sources of counseling are as follows:

- a. AODA Program Coordinator
- b. A non-school counselor mutually agreed upon with the Superintendent prior to the onset of the counseling experience.

**2. Second Violation**

Any student found to be in violation of this policy for the second time during their tenure in the Ashwaubenon Schools will be subject to suspension procedures of the District and a pre-expulsion hearing with the Superintendent of Schools or designee. At the hearing the student and their parents will select one (1) of two (2) possible actions.

- a. As a result of the second violation the student must:
  - 1) seek and complete an AODA assessment by a bona fide AODA treatment center;
  - 2) demonstrate compliance with the treatment program as recommended by said treatment center;
  - 3) successfully complete the treatment program; and
  - 4) agree to a behavioral contract between the student, school administration, and a representative of the AODA treatment center as a condition of re-admittance to the school.
- b. As a result of the second violation the student will be recommended to the Board of Education for expulsion from the Ashwaubenon Schools pursuant to section 120.13(1)(c) of the Wisconsin Statutes for the remainder of the term during which offense occurs and the next full term. The student may, if expelled, receive no credits toward graduation for said term. The District may provide a continuation of educational services during the duration of the expulsion, for which credit may be earned. In addition, the student will be required and their parents may be requested to seek additional counseling and provide written evidence of this counseling to the Superintendent prior to the conclusion of the period for which the student is expelled. Acceptable sources of counseling are as noted above.

**3. Third Violation**

Any student found to be in violation of this policy for a third time will be recommended to the Board of Education for expulsion from the Ashwaubenon Schools for a minimum of the remainder of the semester during which the offense occurs and the next full semester.

The student may, if expelled, receive no credit toward graduation for said semesters. The District may provide a continuation of educational services during the duration of the expulsion, for which credit may be earned. Readmission will be subject to the provisions of Part C (below).

Students found to be in violation of this policy as described in Part B (below) will be subject to the penalty normally associated with a third violation even if it is their first or second violation.

**B. CONSEQUENCES FOR SELLING, DEALING, EXCHANGING, PURCHASING, OR GIVING AWAY INTOXICANTS OR MOOD-ALTERING DRUGS AND DRUG PARAPHERNALIA**

Irrespective of the procedures set forth herein, any student found to be exchanging, distributing, selling, purchasing, receiving, or giving away of intoxicants or mood-altering drugs, or paraphernalia on school premises, or while participating in or attending any school related activity, will be subject to the same penalty normally provided for a third violation as indicated above.

Wisconsin law shall control when determining intent.

**C. READMISSION TO SCHOOL**

Any student who has been expelled in accordance with Section A(2)(b) and Section A(3) above under the provisions set forth in this policy may request re-entry into the Ashwaubenon Public School System via the building principal after expulsion for the balance of the semester and the next full semester. If such a request is made, the student will be required to display evidence that s/he has developed an attitude which clearly indicates that the individual will not again violate the Alcohol and Other Drug Abuse Policy as set forth herein. Administratively the re-entry process must be initiated by the building principal through the Superintendent to the Board.

In accordance with 120.13(1)(L)(h), the Board may reinstate the expelled student before the expiration of the term of the expulsion.

If re-entry is approved after a third violation, it will be understood that any subsequent offense will result in immediate expulsion without the privilege of re-entry under this policy.

#### **D. STUDENT ENROLLMENT IN NON-PUBLIC EDUCATION DURING THE PERIOD OF RULES ENFORCEMENT**

Any student who elects to enroll in any non-public education during the period of time affected by these rules and then chooses to re-enroll in the Ashwaubenon Public Schools will be enrolled only under conditions specified by the Board of Education upon consideration of recommendations by the school principal.

#### **E. USE OF INTOXICANTS OR MOOD-ALTERING DRUGS USED FOR PURPOSES OTHER THAN THOSE PRESCRIBED BY A PHYSICIAN IN A STUDENT OWNED/OPERATED VEHICLE**

Any student who owns or operates a vehicle for attendance at school or school-related activities must accept responsibility for the behavior of others who use that vehicle on school premises or at any school-related activity. This responsibility subjects the owner or operator student to the full ramifications of this policy.

#### **F. ADMINISTRATIVE RULES**

The Superintendent will provide for the development of administrative rules relating to this policy to include all relevant definitions.

## **V. STUDENT SERVICES OFFICE (SCHOOL COUNSELING)**

### **A. SCHOOL COUNSELORS**

School counseling is available for every student in our school. These services include academic, career and college planning, and addressing social/emotional concerns.

Students can be seen for short-term counseling for social emotional/educational issues on an individual basis. Additionally, the school counselors may meet with students as part of our proactive counseling approach if referred by parents, faculty, staff and other students when social emotional/educational concerns arise.

### **B. SCHEDULE CHANGE GUIDELINES**

**Students must make an appointment with their counselor to discuss schedule changes.**

Schedule changes for the **ENTIRE** year must be made within the first 5 days of the school year. Quarter 1 changes must be made within the first 3 days of Quarter 1. No schedule changes are guaranteed.

Counselors may approve schedule changes after this time for the following reasons:

- Graduation requirement not met
- Course prerequisite not met
- Course level adjustment - placement change necessary for student success
- Course previously taken with credit earned
- Adjustment required for enrollment in Early College Credit, Start College Now, Youth Apprenticeship, and work programs

Note: Any other course drops outside the initial schedule change window that are not listed above will be dropped with an F.

Changes **WILL NOT** be made to switch lunches, class periods, or teachers.

## VI. CURRICULUM

### A. GRADUATION REQUIREMENTS (28 credits)

28 credits are required for graduation. All students must complete the following credits required by the DPI or Ashwaubenon School District.



English	4 credits
Math	3 credits
Natural Science	3 credits
Social Science	3 credits
Physical Education	1.5 credits (.5 earned each year, grades 9-11)
Health	0.5 credit (may be fulfilled by Parkview Middle School course)

Elective courses for the balance of the necessary credits will be selected from the following fields: Art, Business, Computer Science, English, Family and Consumer Sciences, Interdisciplinary, Math, Music, Natural Science, Physical Education, Social Science, Technology & Engineering Education, and World Languages.

Twenty-four (24) hours of school approved community service are required for graduation.

### B. GRADING

Report cards are provided quarterly via the PowerSchool Parent/Student portal. Included on the report card are letter grades, teacher comments and absence totals. In addition to the quarterly report cards, special reports may be provided to parents anytime during the grading period to inform parents of student progress. At any time, parents may access a student's grades online via PowerSchool. Parents are urged to contact the teacher either by using our voicemail system, email or personal conference to discuss the student's progress.

Weighted grade points are in effect for all AP, Honors, and courses included in the advanced core recommendation for ACT preparation as indicated below.

Weighted Courses	
Advanced Biology	AP US History
AP American Government	Calculus 1
AP Art & Design (2-D, 3-D, Drawing)	English 1 Honors
AP Biology	English 2 Honors
AP Calculus	Inorganic Chemistry
AP Chemistry	Math 1 Honors
AP Computer Science A	Math 2 Honors
AP Computer Science Principles	Math 3 Honors
AP Environmental Science	Math 4/Math 4 Honors
AP Language & Composition	Math 5/Math 5 Honors
AP Literature & Composition	Organic Chemistry
AP Macroeconomics	Physics
AP Psychology	
AP Statistics	Approved College Courses

Grade	Grade Scale	Standard Grade Points	Weighted Grade Points
A	95-100	4.00	5.00
A-	93-94	3.67	4.67
B+	91-92	3.33	4.33
B	87-90	3.00	4.00
B-	85-86	2.67	3.67
C+	83-84	2.33	3.33
C	79-82	2.00	3.00
C-	77-78	1.67	2.67
D+	75-76	1.33	1.33
D	71-74	1.00	1.00
D-	69-70	0.67	0.67
F	0-68	0	0

### C. GRADE CHANGES

Changes in the final grade only occur when a clerical or calculation mistake has taken place. The Registrar's Office, in conjunction with the teacher and an administrator will handle appeals of this nature.

## D. REGISTRATION

Course registration plans for the upcoming school year will be given to students and parents at the end of the first semester. Students are encouraged to plan their schedule with their counselor and parents.

## E. COURSES ATTEMPTED A SECOND TIME

Any student who earns a "D" or "F" in a course and chooses to retake the course will be given the grade earned as a result of the second attempt. The credit from the first grade will be removed on the transcript. Any student who receives an "A," "B," or "C" may not have a grade change or earned credit as a result of a second attempt at the course.

## F. HONOR ROLL

An Honor Roll (GPA of 3.0 to 3.499) and a High Honor Roll (GPA of 3.5 and above) will be prepared after each semester. These lists are disseminated to all area newspapers.

## G. ACADEMIC AWARDS PROGRAM

A student who makes the Honor Roll earns 1 academic point. A student who makes the High Honor Roll earns 2 academic points. A student will be awarded an Academic letter when 6 points are earned. For each all A semester, the student receives a certificate.

## H. NATIONAL HONOR SOCIETY

The Ashwaubenon chapter of the National Honor Society selection criteria is established to recognize students who demonstrate excellence in the areas of Scholarship, Leadership, Service, and Character. The selection process takes place each year in the fall. Chapters of NHS nationwide set criteria specific to their school. It is a good idea to keep these criteria in mind as you plan your academic schedule beginning in your freshman year.

**Scholarship:** Eligible juniors and seniors must have a cumulative grade point average of 3.67 or higher in order to be invited to pursue membership. Also, they must have completed, or are currently enrolled in, at least five of the following courses: Advanced Placement (AP) in any subject area, English Honors path, Math Honors path, Advanced Biology, Inorganic or Organic Chemistry, Physics 201, or World Language level IV or higher.

**Service:** Students must have 12 hours of community service for each year they have attended AHS. Specifically, 11th grade students need 24 hours and 12th grade students need 36 hours. Community service hours must be recorded in the registrar's office by the end of September for a student to be invited to seek membership in the NHS.

**Leadership & Character:** Students invited to seek membership are required to write a short essay providing personal examples of good character and strong leadership skills. Essays and a formal list of extracurricular involvements are reviewed by a faculty committee for induction purposes. No student will be considered who has had honor code violations during the year they are seeking membership in NHS.

## I. VALEDICTORIAN and SALUTATORIAN DETERMINATION/FINAL CLASS RANK

The valedictorian(s) shall be the student(s) who has the highest-grade point average at the end of 15 AHS grading terms. The salutatorian shall be the student(s) who has the second highest GPA at the end of 15 AHS grading terms. (Official and final class rank will be determined after the completion of 16 terms for a final transcript sent to a college or university and will not impact valedictorian and salutatorian recognition nor the Wisconsin academic excellence scholarship).

**Tie-Breaking Procedure:** When the principal finds more than one student to be equal based on eligibility and selection criteria established, the principal shall employ the following procedure to break the tie to name the valedictorian and salutatorian.

1. If a tie exists, the student with the highest score on the American College Test (ACT) by the end of the semester preceding the selection deadline shall be named the scholar. If any of the students involved



have taken the ACT more than once, the highest composite score received, prior to the election deadline, will be used.

2. If a tie continues to exist, the student who is a National Merit Finalist shall be named the scholar.
3. If a tie continues to exist, the principal will select the scholar by applying the following factors:
  - a. The candidates' selection of courses throughout their high school career is defined by electives in a core area (English, Natural Science, Social Science, Mathematics, and World Language). The principal will assign points to each core elective not already weighted in the GPA or required to be taken for graduation that a student has taken by the end of the 15th AHS grading term. Half a point will be assigned to a half credit elective and one point will be assigned to a one credit elective.

## **J. EARLY COLLEGE CREDIT/START COLLEGE NOW PROGRAMS**

Application Deadlines - Deadlines are written into state law. No extensions/exceptions are permitted.

March 1 - Fall Courses

October 1 - Spring Courses

**The Early College Credit Program** allows students who have met institutional criteria for admission to take courses at a University of Wisconsin Institution, tribally controlled, or a participating private, non-profit institution of higher education located in the state.

**The Start College Now Program** allows students in grades 11 and 12 who have met institutional criteria for admission to take courses at a technical college. Students must be in good academic standing and have no disciplinary/enrollment issues.

**For both programs**, the Ashwaubenon School District determines whether a course satisfies state graduation requirements and what, if any, high school credits are to be awarded. Requested courses will be approved per DPI guidelines. Courses that are offered at AHS or closely follow the curriculum of a course may be denied. Courses that are approved and fulfill a graduation requirement may be awarded high school and college credit and the Ashwaubenon School District will cover the entire cost in accordance with policy. If a course does not fulfill a graduation requirement, students will receive college credit only and will be responsible for 25% of the course fees. Students who may face financial hardship can apply for a fee waiver for ECCP and high school courses taken concurrently, high school courses will be counted toward graduation requirements first.

If the application is approved, the school district will pay the actual cost of tuition, fees, books and other necessary material directly related to courses taken for high school credit at a UW campus or center or a Wisconsin technical college. Transportation costs for the Early College Credit Program may be reimbursed for families demonstrating financial need. Students enrolled in the Start College Now Program are responsible for transportation to and/or from the technical college. Per the Ashwaubenon School District's Parent/Student Early College Credit and Start College Now Agreements, parents agree to assume financial obligations for courses that are not successfully completed.

### **Eligibility/Application:**

- Students must meet with a counselor to discuss the policies and procedures for the Early College Credit/Start College Now Programs prior to receiving an application for either program.
- Students applying for the Start College Program may have not more than 5 unexcused absences/tardies during the semester prior to application and no office referrals for the prior 3 quarters.
- Students may not take more than 2 classes per semester.
- In order for students to register for an approved course, students must meet course requirements, prerequisites, and there must be space available in the course.
- Students may only take courses specifically approved by the Ashwaubenon Board of Education and may not substitute with other college courses.



## VII. CO-CURRICULAR ACTIVITIES/ATHLETICS

**Activities Director** – Mr. Nicholas Senger  
**Team Nickname** – Jaguars

**School Colors** – Green, Gold and White  
**Conference** – Fox River Classic Conference

**Website** – [www.ashwaubenon.k12.wi.us](http://www.ashwaubenon.k12.wi.us)

---

### **Co-Curricular Activities:**

Academic Games	Destination Imagination	Jazz Band II	Pit Band
Art Club	ECO Club	Math Team	Skills USA
Battle of the Books	Encore	Musical	Spanish Club
Bowling Team	Fishing Club	National Honor Society	Spring Play
Cheer & Stunt Team	Forensics	Nordic Ski Team	Sting Cancer Club
Computer Club	Formula Student USA	One-Act Play	Student Council
Dance Team	German Club	Performing Arts Club	Trap Shooting Club
DECA	GSA	PAC Technical Staff	Yearbook

### **Athletics:**

Baseball - Boys	Golf - Boys	Softball - Girls	Track and Field - Girls
Basketball - Boys	Golf - Girls	Swimming - Boys	Volleyball - Girls
Basketball - Girls	Hockey - Boys	Swimming - Girls	Wrestling - Boys
Cross Country - Boys	Hockey - Girls	Tennis - Boys	Wrestling - Girls
Cross Country - Girls	Soccer - Boys	Tennis - Girls	
Football - Coed	Soccer - Girls	Track and Field - Boys	

**If you would like further information about any of the activity groups, clubs, or sport teams on the following pages, please feel free to contact the advisor or coach listed or the Athletics/Activities desk in the main office. E-mail addresses are provided for each activity advisor/coach, or they may be reached through the AHS main office at (920) 492-2950.**

---

### **Booster Organizations Supporting Jaguar Clubs, Activities and Athletics:**

**Ashwaubenon Music Parents Association (AMPA):** All parents of music students in the Ashwaubenon School District are members of AMPA. AMPA fundraising supports many music programs and activities throughout the district each year. Contact Billie Kramer at [ahsmusicparents@gmail.com](mailto:ahsmusicparents@gmail.com) for information regarding AMPA.

**Jaguar Backers:** Jaguar Backers is the Ashwaubenon High School Booster Club that helps by financially supporting kids and their involvement in ALL Co-Curricular Activities and Clubs. Contact Patty Kiewiz at [pkkiewiz@yahoo.com](mailto:pkkiewiz@yahoo.com) or visit the Jaguar Backers link online at the high school home page. Meetings are held on the 3<sup>rd</sup> Monday of each month in the high school library at 6:00pm.

## A. CO-CURRICULAR ACTIVITIES

### 1. Academic Games

**Advisors: Mrs. Amy Kelly, Mrs. Lynn Dehnel, and Mrs. Lisa Stomberg**

Academic Games is a competition which includes student teams in four areas: English Language Arts, Math, Science, and Social Studies. Each group gets together a couple of times during the school year to prepare for a one-day competition for local high school students held in the spring (usually in April). Teams are made up of 5 to 10 students. Announcements about signing up to participate on an Academic Games Team will be made during the school year. Being involved with Academic Games is a fun way to represent your school in competition and to show off your skills and brain power!

### 2. Art Club

**Advisor: Mr. George Reynolds – [greynolds@ashwaubenonk12.org](mailto:greynolds@ashwaubenonk12.org)**

Are you interested in art but don't have time to squeeze an art class into your schedule? You don't have to be in an art class to join the AHS Art Club! Art club is open to all who enjoy using their art skills to make Ashwaubenon High School a better place. Club meetings are held after school twice a month. Some of the activities Art Club members get involved with throughout the school year include:

- Making posters, signs and murals for various activities, sports events, and organizations.
- Decorating the commons for Homecoming, face painting for community events, and participating in collaborative social projects.
- Various independent and group art projects.
- Visiting local artists and art displays.
- Field Trips to art museums, design centers, and galleries.



### 3. Battle of the Books

**Advisor: Mrs. Nadine Mathu – [nmathu@ashwaubenonk12.org](mailto:nmathu@ashwaubenonk12.org)**



Do you like to read? Battle of the Books promotes reading a variety of current award-winning books for young adults. The list for the Wisconsin High School Battle of the Books is distributed each September, and teams have until February to read the twenty books. One team is selected to represent the high school at the State online competition, which takes place in late February. It is easy, fun and online - no traveling is required! Teams of 2 to 4 students start forming in fall and read all twenty books on the list or have each member responsible for only five books. In January the teams can take short online practice quizzes to test their team's knowledge about plots, characters and settings. The team with the highest practice test score represents AHS at the State online competition. Sign up for Battle of the Books in the Library Media Center.

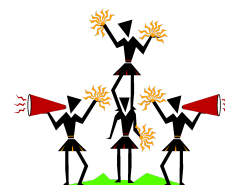
### 4. Bowling Team

**Coaches: Beth Polomis and Brad Skenandore**

### 5. Cheer & Stunt Mascot Team

**Coach: Ms. Morgan Borchardt – [mborchardt@ashwaubenonk12.org](mailto:mborchardt@ashwaubenonk12.org)**

Members of the AHS Cheer & Stunt Mascot Team have a great time showing their school spirit by supporting Jaguar activities and athletics. Make new and lifelong friends while improving your strength, flexibility and coordination. The Cheer Team travels to camps, competitions and some away athletic events. Tryouts are held in May. For more information visit their website <https://ahsjagcheer.wixsite.com/jaguarcheer>. All Cheer Team members are required to attend a Co-curricular Code Meeting and have a physical examination form on file. Join the Cheer & Stunt Team and show your Jaguar Spirit!



### 6. Computer Club

**Advisor: Mr. Craig Hoiska – [choiska@ashwaubenonk12.org](mailto:choiska@ashwaubenonk12.org)**

## 7. Dance Team

**Coaches:** Mr. Rodney Anderson – [rodneyanderson.rja@gmail.com](mailto:rodneyanderson.rja@gmail.com)

Mr. Drew Meinel – [ameinel@ashwaubenonk12.org](mailto:ameinel@ashwaubenonk12.org)

If you like to dance... if you like to perform... The Dance Team is for you! The AHS Dance Team performs at football games, soccer games, basketball games and wrestling meets, and also participates in major competitions. If you have school spirit, want to expand your dance skills and make friends at the same time, try out for the Dance Team! Try-outs are held in May and the season runs from June through March with practices held 3 days per week in the fall, and 4 days per week in the winter. All Dance Team members are required to attend a Co-Curricular Code Meeting and have a physical examination form on file.

## 8. DECA

**Advisor:** Ms. Jennifer Berendsen – [jberendsen@ashwaubenonk12.org](mailto:jberendsen@ashwaubenonk12.org)

The DECA Club at AHS is part of the National DECA Association of Marketing Students. It is a business and marketing club open to all students. Some of the activities DECA members are involved with include: the annual Homecoming Dodgeball Tournament, fundraising with the DECA Card, and the Valentine's Day Data Match. Students who choose to may compete at Regional, State and National levels in business tests and role play. The competitions are great to put on job and college applications. DECA meets approximately once per month.

## 9. Destination Imagination

**Advisor:** Ms. Michelle Haapala – [mhaapala@ashwaubenonk12.org](mailto:mhaapala@ashwaubenonk12.org)

*Calling All Creative Minds!* **Destination ImagiNation, Inc.** (D.I.) is the world's largest creativity and problem-solving organization. Students participating on D.I. teams are challenged to learn the process, art and skills associated with creative problem solving. D.I. provides "real world" benefits:

- Fosters creative and critical thinking
- Develops teamwork, collaboration and leadership skills
- Grows research and inquiry skills
- Enhances and applies written communication and oral presentation skills



The D.I. program provides a place where students take what they know and learn to apply it to solve challenges, working together and cooperatively with a team. It's a place where wild, out-of-the-box thinking is encouraged and set loose! Teams of up to seven members compete against teams from other schools. There are five competitive "Team Challenges" from which teams may choose, each with its own focus (Technical Design, Science, Theatrical, Improvisation, & Structural Building). DI teams form in September and begin the season in October. Regional tournaments take place in March, followed by the State Tournament in April and Globals in May.

## 10. ECO Club

**Advisor:** Mr. Dan Albrent – [dalbrent@ashwaubenonk12.org](mailto:dalbrent@ashwaubenonk12.org)

The ECO Club is a student-run club focused on environmental consciousness. We believe in sustainable living, "going green". Our mission is to promote environmental consciousness on Ashwaubenon High School's campus and to learn about sustainable living from other world and national organizations. Some of the activities include:

- Growing and harvesting food in the courtyard and greenhouse
- Working with hydroponics and aquaponics setups
- Learn how to tap maple trees and make maple syrup
- Volunteer hiking and cleanup trips to state parks
- End-of-year camping trip to Peninsula State Park
- Student-run projects

### 11. Encore Show Choir

**Advisor:** Ms. Kristen LaChance – [klachance@ashwaubenonk12.org](mailto:klachance@ashwaubenonk12.org)

Be a musical ambassador for Ashwaubenon High School and perform in the community! The Encore Show Choir is a group of approximately 20 male and female singers/dancers who perform at various school and community functions throughout the school year. If you can read music, enjoy singing and like to dance, you should consider trying out for Encore. Members of Encore must be enrolled in one of the AHS choirs or bands to audition. Auditions are held in the spring for the following school year. Rehearsals are held outside regular school hours and Encore members receive .5 high school credit for participating.



### 12. Fishing Club

**Advisor:** Mr. Kevin Phillips – [kphillips@ashwaubenonk12.org](mailto:kphillips@ashwaubenonk12.org)

### 13. Forensics Team

**Advisor:** Mrs. Lindsey Hilgemann – [lhilgemann@ashwaubenonk12.org](mailto:lhilgemann@ashwaubenonk12.org)

Forensics is open to any high school student who is interested in dramatic or expressive performance. Students can perform in a group or as individuals. Forensics is a lot of fun and a great way to meet other students. Here are the categories of forensics competition:

- Group Interpretation
- Farrago
- Poetry Reading
- Prose
- Storytelling
- Play Acting
- Solo Acting
- Public Address
- Special Occasion
- Radio Speaking
- Four-Minute Speech
- Oratory
- Moments in History
- Demonstration Speaking
- Extemporaneous Speaking

### 14. Formula Student USA

**Advisor:** Mr. Jeremie Meyer – [jmeyer@ashwaubenonk12.org](mailto:jmeyer@ashwaubenonk12.org)

This club is for students who would like to build and test a replica race vehicle. Students meet on Tuesdays from 4:30-7:30 either at Ashwaubenon High School or at Northeast Wisconsin Technical College. Club members engineer, manufacture and build either an open wheel or road race style of vehicle. They compete against teams from around the state at the CTech Manufacturing Motorplex at Road America in May, where they test their vehicles and their driving skills on a safe, supervised track facility under the watchful eyes of Road America's driving instructors. Students are also exposed to local, state and national companies and sponsors. More details are available at [FormulaStudentsUSA.com](http://FormulaStudentsUSA.com) or on their Facebook page.

### 15. German Club

**Advisor:** Mrs. Melanie Lasee – [mlasee@ashwaubenonk12.org](mailto:mlasee@ashwaubenonk12.org)

Deutsch macht Spaß! If you are enrolled in a German class at AHS, join the German Club and have some fun while making new friends! Some of the activities that German Club members participate in during the school year include the annual "German Day" at UW-Madison, Oktoberfest, Christkindlmarkt in Chicago, Fasching, community service and other exciting events.



**Be a GAPP Partner!** Travel and see some of the world by being a partner in the German American Partnership Program (GAPP). GAPP promotes cultural exchange. Ashwaubenon GAPP students are host families for a German student and then get the opportunity to go to Germany and experience the hospitality of a partner family.

**German National Honor Society:** German students also have the opportunity to be in the German National Honor Society (GNHS). GNHS membership requires students to have completed German III, have a cumulative GPA of 3.0, with a GPA of 3.6 in German. To maintain yearly membership, you must be enrolled in a German class, participate in four German activities and do 5 service hours using German in the community.

### 16. GSA

**Advisor:** Mrs. Ellen Moon – [emoon@ashwaubenonk12.org](mailto:emoon@ashwaubenonk12.org)

## 17. Jazz Band II

**Advisor:** Mrs. Ellen Moon – [emoon@ashwaubenonk12.org](mailto:emoon@ashwaubenonk12.org)

Jazz Band II is a .5 credit course for students playing trumpet, trombone, saxophone, piano, bass and drums. Students who participate in Jazz Band are from the Freshman Band, Symphonic Band and Wind Ensemble, with some limits on the number of pianos, basses, guitars and drums.



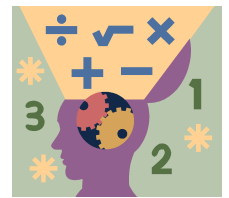
Some of the activities involved with Jazz Band include Solo-Ensemble competition, a weekend trip to the Rolling Meadows Jazz Festival in Chicago and concert performances. Rehearsals are usually Tuesdays and Fridays before school beginning in January. Occasional sectionals after school may also take place when student schedules permit. Students may sign up for Jazz Band during band class in November.

## 18. Math Team

**Advisors:** Mrs. Lisa Stomberg – [lstomberg@ashwaubenonk12.org](mailto:lstomberg@ashwaubenonk12.org)

Mrs. Cassandra Schneider – [cschneider@ashwaubenonk12.org](mailto:cschneider@ashwaubenonk12.org)

Math Team is for ANY student who enjoys exploring and having fun with mathematics, logic, independent learning, competition, and teamwork. Math Team is an excellent opportunity to explore mathematics topics that are not always encountered in the classroom. Students will build one's skills in mathematics and in general problem-solving while being supported by team members. Math Team is a great way to get involved at AHS!



Metro Math Meets are scheduled 5 times a year (on a Monday night in September, October, November, January, and February). Competition is between twelve area schools with both team and individual awards earned. It isn't too early or too late to join the math team!

## 19. Musical Program

**Director:** Mr. Bernie Rocheleau – [BRocheleau10@gmail.com](mailto:BRocheleau10@gmail.com)



The musical at AHS is a grand tradition each year and offers so many ways to get involved – singing, acting, set design, stage crew, technical support, pit band and marketing. Some of the recent musicals include *Fiddler on the Roof*, *A Christmas Carol*, *Spamalot*, *The Sound of Music*, *Mary Poppins*, *School of Rock!* And more! Auditions are held early in September with performances scheduled in November. What can you gain by being in the show? Character development, teamwork and a tremendous sense of camaraderie are just some of the benefits of participating in a show of this magnitude. Work on a fabulous set, learn fresh and fun choreography, sing rousing songs, explore character development, and work on an award-winning production! The Musical program is a participant in the Center State Musical Awards through the Fox Cities Performing Arts Center, which provides opportunities for development and support to high school students involved in musicals.

## 20. National Honor Society

**Advisors:** Mrs. Nadine Mathu – [nmathu@ashwaubenonk12.org](mailto:nmathu@ashwaubenonk12.org)

Mrs. Cortney Lemens – [clemens@ashwaubenonk12.org](mailto:clemens@ashwaubenonk12.org)

In October the selection committee seeks new members through a selection process based on student qualification in the following four areas: scholarship, service, leadership and character. Students are considered as juniors and seniors if they have a 3.67 minimum cumulative GPA and show strength of schedule, by successfully completing or currently enrolled in five or more honors level courses since the freshman year, in addition to having completed 24 or 36 hours of community service respectively. Upon meeting the above requirements, students are formally invited to apply for membership. Through this process, students are expected to write a short essay providing personal examples of good character and strong leadership skills. Essays and a formal list of extracurricular involvements are reviewed by a faculty committee for induction purposes. The induction ceremony for the Ashwaubenon Chapter of National Honor Society takes place yearly in March. NHS provides opportunities for service projects.

## 21. Nordic Ski Team

**Coach: Mr. Scott Putman – [cputman@new.rr.com](mailto:cputman@new.rr.com)**

Cross Country Skiing is a fun and competitive way to spend the winter sports season – enjoy the outdoors, stay in shape, build strength for spring sports, and it's also great for runners! Train with distance and sprint workouts and enjoy weekly competitive racing. Highlights include overnight trips to State competition and the Birkie. More information about the AHS Nordic Ski Team can be found at [skiwithanst.org](http://skiwithanst.org).



## 22. One-Act Play Competition

**Advisor: Contact the Activities/Athletics Desk in the Main Office**

If you like to perform on stage, participating in the One-Act Play competition is a great way to get involved at AHS and to make new friends. Students work together to learn their parts in the One-Act Play and then compete against other schools with their performance. Auditions are held the 2<sup>nd</sup> week of school and rehearsals begin immediately following, with District competition occurring in mid-October. The AHS One-Act Play group has had strong showings in recent years at District, Sectional and State competitions. Consider auditioning for the One-Act Play this year for a fun group experience!

## 23. Performing Arts Club

**Advisor: Contact the Activities/Athletics Desk in the Main Office**

Students involved in the Musical, One-Act Play, Spring Play and/or the Theater Arts class, cast or technical crew and anyone interested in the performance arts may be members of the Ashwaubenon Performing Arts Club (PAC). Meetings are held after school on Tuesdays in Room 165. The Performing Arts Club strives to provide opportunities for students to develop their performance and theatrical skills by providing drama workshops, outings to see musicals and plays, social outings and support for its members throughout the year. The Performing Arts Club also presents the AHS Talent Show each February.

## 24. Performing Arts Center Technical Staff

**Advisor: Mr. Bernie Rocheleau – [BRocheleau10@gmail.com](mailto:BRocheleau10@gmail.com)**

Select students are chosen to be trained to operate the technical systems in the Ashwaubenon Performing Arts Center. Students must demonstrate a genuine interest in working for professional shows, as well as school and community events to include running lights, sound, spotlights, rigging, staging, setting up and striking. Training is provided during the academic focus period, for which students must be available and workers must be responsible, and be available for some evening and weekend work. Please contact Mr. Rocheleau if interested.



## 25. Pit Band for AHS Musical

**Advisor: Mr. Marc Jimos – [mjimos@ashwaubenonk12.org](mailto:mjimos@ashwaubenonk12.org)**

What's a Musical without *music*? Every year the most advanced musicians at AHS join the Pit Band to accompany the school musical. Pit Band members meet and practice after school 3 times weekly during the month prior to the performances, as well as for the dress rehearsals. Musical Pit Band sign-up is held in October. Be a part of this AHS tradition and see the musical from a unique vantage point!



## 26. Skills USA

**Advisors: Mr. Tom Barnhart – [tbarnhart@ashwaubenonk12.org](mailto:tbarnhart@ashwaubenonk12.org)**

**Mr. Dave Stroud – [dstroud@ashwaubenonk12.org](mailto:dstroud@ashwaubenonk12.org)**

SkillsUSA is a partnership of students, teachers and industry representatives, working together to ensure America has a skilled workforce. It helps each student excel. SkillsUSA is a national nonprofit organization serving teachers and high schools who are preparing for careers in trade, technical and skilled service occupations, including health occupations.



## 27. Spanish Club

Advisor: Jennifer Glandt – [jglandt@ashwaubenonk12.org](mailto:jglandt@ashwaubenonk12.org)



Spanish Club exists to offer students fun and interesting ways to take their language skills beyond the classroom. Spanish Club members strive to further explore the variety of Hispanic cultures, to promote cultural and linguistic awareness in the community, and to offer opportunities for community service.

Some activities from recent years include:

- Lunches/dinners in ethnic restaurants
- Movies from Spanish-speaking countries, either dubbed or with subtitles
- Bilingual Story Hour at the Ashwaubenon Library
- Spanish cooking classes
- Helping on distribution day for “Coats for Kids” charity
- Donations to Give-a-Kid-a-Book project
- Fair Trade Fundraiser
- Tutoring Spanish students at all levels
- Volunteering with the Brown County Literacy Council

**Spanish National Honor Society (SNHS):** While Spanish Club participation is open to all students, SNHS membership is by application only. Ashwaubenon’s La Catrina chapter was established in 2006. Members must have a sophomore standing, have completed Spanish III, have a 3.5 GPA overall, a 3.66 GPA in Spanish classes, documented participation in 4 Spanish Club events per semester, and at least ONE Spanish course EACH year. Membership induction is held in a formal ceremony each February.

## 28. Spring Play

Advisor: Contact the Activities/Athletics Desk in the Main Office

Do you like to act? Be involved in the theater? AHS Spring Play is a unique opportunity to be involved in theater, and it’s a special opportunity to be part of a student-directed play! The annual Spring Play is open to all high school students by audition. Auditions are usually held in February with performances in late April or early May. Listen for detailed announcements each spring and join in the auditions to be in the play or to be a part of the stage crew.

## 29. Sting Cancer

Advisor: Ms. Val Hodgson – [vhodgson@ashwaubenonk12.org](mailto:vhodgson@ashwaubenonk12.org)

Mrs. Tasha Cook – [tcook@ashwaubenonk12.org](mailto:tcook@ashwaubenonk12.org)

STINGCANCER is a committed passionate collaboration of high school students and staff dedicated to reducing the effects of cancer. Sting Cancer initiates, supports, and promotes activities for the school and the surrounding community.

## 30. Student Council

Advisor: Mr. Kevin Penza – [kpenza@ashwaubenonk12.org](mailto:kpenza@ashwaubenonk12.org)

Mr. Dave Stroud – [dstroud@ashwaubenonk12.org](mailto:dstroud@ashwaubenonk12.org)



**The Student Council is your voice in school government!** Why should you consider running for Student Council? One of the benefits of being a part of the Student Council is to be actively involved in decisions and activities at AHS. It is an opportunity to gain leadership experience and learn first-hand how the government works. Student Council also allows students to promote awareness of important issues and demonstrate commitment to their school and community. If you would like to seek nomination to be a Student Council representative, listen for an announcement

and watch for the fall nomination papers to become a class representative. Some of the activities and projects in which Student Council members participate include:

- Homecoming
- Blood Drives
- Teacher appreciation
- Fundraising
- Leadership Training
- Christmas Adopt-a-Family
- Kids-on-Kids
- Rock-in Crime Prevention
- Assisting in class activities
- Eco-Week

## 31. Trap Shooting Club

Advisor: Mr. Tom Beno – [tom\\_beno@yahoo.com](mailto:tom_beno@yahoo.com)

## 32. Yearbook Staff

Advisor: Ms. Angela Krueger – [akrueger@ashwaubenonk12.org](mailto:akrueger@ashwaubenonk12.org)



“The Paw” Yearbook publication is a club that meets regularly to create the yearbook. The yearbook staff looks for diligent workers and leaders who are self-motivated to take pictures, design pages and write copy/captions. Student staff members work on assignments, photography, conduct interviews and complete yearbook pages by a given deadline.

## B. WIAA INTERSCHOLASTIC ATHLETICS

### 1. Baseball – Boys Teams

Varsity Coach: Mr. Jason Hill – [jhill@ashwaubenonk12.org](mailto:jhill@ashwaubenonk12.org)

Baseball is America’s favorite pastime! The AHS boy’s baseball teams play in the spring season from March through the end of school. Practices for the JV2, JV1, and Varsity teams are usually held right after school. Games are held throughout the week and some weekends. The Varsity team plays their home games at Ashwaubomay Park, with JV1 and JV2 at Klipstine Park.



### 2. Basketball – Boys Teams

Varsity Coach: Mr. Mark Tomashek – [Mark\\_Tomashek@ashwaubenonk12.org](mailto:Mark_Tomashek@ashwaubenonk12.org)

The boys’ basketball program runs in the winter sports season from mid-November through March. JV2, JV1 and Varsity team practices are either after school or at 5:30, with games throughout the week and some weekends.



### 3. Basketball – Girls Teams

Varsity Coach: Mr. Mike Radue – [coachradue@gmail.com](mailto:coachradue@gmail.com)

The girls’ basketball program runs in the winter sports season from mid-November through March. JV and Varsity team practices are usually held right after school, with games throughout the week and some weekends.

### 4. Cross-Country Team – Boys and Girls

Head Coach: Mr. Cal Kromm – [cjkromm@gmail.com](mailto:cjkromm@gmail.com)

No experience is necessary to join the AHS Coed Cross-Country Team. Join this fall season sport where everyone competes in every meet! Practices are held beginning in August and then after school in September and October. There are usually 1 or 2 meets each week. Boys’ and girls’ races are approximately 5K (3.1 mi.). You’ll develop great friendships through running with the team and enjoy fun-filled spaghetti dinners and other activities with your teammates. Join the Cross-Country Team and get in shape ... or stay in shape!

### 5. Football Teams

Varsity Coach: Mr. Brian Ryczkowski – [bryczkowski@ashwaubenonk12.org](mailto:bryczkowski@ashwaubenonk12.org)



If you enjoy playing football, then why not go out for the JV2, JV1 or Varsity football team and become part of the legendary Jaguar sports tradition! Develop lifelong friendships while working together to learn not only the challenging skills of football, but also team discipline and team commitment. Practices start in August and are held after school in September and October. JV2 and JV1 games are held during the week and Varsity games are on Friday nights. If you enjoy playing football, then take on the challenge and become a Jaguar football player!

### 6. Golf – Boys Team

Varsity Coach: Mr. Craig Hoiska – [choiska@ashwaubenonk12.org](mailto:choiska@ashwaubenonk12.org)

Spend your spring sports season enjoying a great game of golf! The AHS boy’s golf team is for both experienced and non-experienced golfers. Train with coaches and improve your game on a daily basis – and golf for free!





## 7. Golf – Girls Team

**Varsity Coach: Mr. Kevin Penza – [kpenza@ashwaubenonk12.org](mailto:kpenza@ashwaubenonk12.org)**

Whether you're an experienced golfer, or you have never played before, why not consider joining the AHS girls golf team – it's a great time to try something new, exciting and fun! The girl's golf season begins with practices early in August and runs through the first part of October.

## 8. Hockey – Boys Teams

**Coach: Mr. Brenden Syed – [brendonsyed@gmail.com](mailto:brendonsyed@gmail.com)**

If you've played hockey competitively before, don't miss out on being a part of the Jaguar hockey program! The JV and Varsity hockey season runs from mid-November through February, with practices after school at the Cornerstone Ice Center. Games take place during the week or on weekends.



## 9. Hockey – Girls Co-op Team

**Contact: Mr. Joe Gerarden – [gerardy17@yahoo.com](mailto:gerardy17@yahoo.com)**

Be a part of the Bay Area Ice Bears Green Bay Co-op Girls Hockey Team! The Bay Area Ice Bears season runs from November through March with games taking place during the week or on weekends.

## 10. Soccer – Boys Teams

**Coach: Mr. Zach Jakel – [zjakel@ashwaubenonk12.org](mailto:zjakel@ashwaubenonk12.org)**



Soccer players of all skill levels are encouraged to try out for the JV and Varsity boys' soccer teams. The season for boys' soccer runs from August to October, with practices usually right after school. Practices are held at the high school on the Willard practice field, and games are played on Goelz Field.

## 11. Soccer – Girls Teams

**Coach: Ms. Emily Bangen – [emily.bangen@gmail.com](mailto:emily.bangen@gmail.com)**

Whether you have played competitive girls' soccer before, or if you're just starting out, all skill levels are encouraged to try out for the Jaguar girl's JV and Varsity soccer teams. The girls' soccer teams play in the spring sports season from March through May. Practices are after school and games are played during the week, with occasional weekend tournaments. Games are played at Goelz Field.

## 12. Softball – Girls Teams

**Varsity Coach: Mr. Shannon VanLaanen – [vanlan0318@gmail.com](mailto:vanlan0318@gmail.com)**

Girls who are interested in playing a competitive spring season sport should consider being a part of the strong tradition of Jaguar softball! Teamwork, dedication and hard work are the team goals for everyone to achieve. Freshman, JV, and Varsity team practices are held after school at Pioneer Park from March through May.

## 13. Swim – Boys Team

**Coach: Mr. Jason Martin – [jmartin@ashwaubenonk12.org](mailto:jmartin@ashwaubenonk12.org)**

Are you interested in competitive swimming? If you want to be involved in a healthy activity, escape the cold weather, and participate in a fun sport this winter, then come join the AHS boys swim team! The season falls in the winter sports category and runs from November through February. Competitive swim experience is NOT necessary, but we expect you to be comfortable swimming 50 yards (2 lengths of the pool) and be willing to learn the other strokes.



## 14. Swim – Girls Team

**Varsity Coach: Ms. Kari Kleczka – [kkleczka@ashwaubenonk12.org](mailto:kkleczka@ashwaubenonk12.org)**

If you enjoy swimming and want to be involved in a healthy activity and have fun, why not join the girls swim team! AHS is looking for some strong female team members – swimmers need to be able to swim at least 2 competitive strokes (butterfly, backstroke, breaststroke or freestyle) and be able to swim 50 yards (2 lengths of the pool). Meets are held weekly, on Tuesdays, Thursdays, or Saturday and practices are held daily August through mid-November.

## 15. Tennis – Boys Team

**Coaches:** Mr. Jason Fonder – [jfonder@gmail.com](mailto:jfonder@gmail.com)

Boy's tennis is played in the spring sport season from March through the end of May. Beginners and experienced tennis players are encouraged to come out for the JV and Varsity teams. Practices and games are held at the Pioneer tennis courts and at Cornerstone Sports Complex.

## 16. Tennis – Girls Team

**Coaches:** Ms. Raelynn Wingert – [rwingert9@gmail.com](mailto:rwingert9@gmail.com)

Girl's tennis is a fall season sport at AHS and is open to all levels of tennis players. Practice for the JV and Varsity teams begins in August and runs through October. Practices and meets are held at the Pioneer Park and Cornerstone tennis courts. If you enjoy playing tennis and being active, consider playing for the AHS tennis team!

## 17. Track & Field Teams

**Varsity Coach:** Mr. Cal Kromm – [cjkromm@gmail.com](mailto:cjkromm@gmail.com)

Being a member of the AHS track and field team gives you not only the opportunity to develop your skills in running and field events, but it also helps you to develop endurance, strength, flexibility and competitiveness. The track and field team competes during the spring sport season, and if you are involved in a winter or fall sport, it's also a great way to help you stay in shape for the next season! Track and field is a co-ed sport with boys and girls beginning the after-school practice sessions together, receiving the same instruction and similar workouts, and finishing the practice together. Home meets are held at Goelz Field. If you like to run, or just want to get in better shape, why not join the AHS track and field team!

## 18. Volleyball – Girls Teams

**Varsity Coach:** Mr. Jim Swim – [jswim@ashwaubenonk12.org](mailto:jswim@ashwaubenonk12.org)

Volleyball is a fall sport at AHS. The season begins in August, with Freshman, JV2, JV1 and Varsity practices in the evening (after school once the school year begins). Ninth graders will have the opportunity to make one of two teams. Matches and tournaments take place during the week and on Saturdays. No matter if you have never played before or are advanced, if you are active and enjoy playing a competitive and exciting sport, you should consider trying out for one of the AHS volleyball teams!

## 19. Wrestling Teams

**Head Coach:** Mr. Chase DeCleene – [cdecleene@ashwaubenonk12.org](mailto:cdecleene@ashwaubenonk12.org)



Whether you are an experienced wrestler or just starting out, the JV and Varsity wrestling teams are open to all levels of students. Weight classes range from 103 to 285 pounds. The AHS wrestling teams strive for excellence and have achieved four consecutive conference championships in recent years. Being a part of the wrestling team will help to improve your strength, coordination and balance, while also developing a strong sense of self-confidence. If you want to be in the best physical and mental condition possible, consider going out for the AHS wrestling team.

# VIII. PARTICIPATION REQUIREMENTS

## History of AHS Interscholastic Program and Conference Affiliation

Ashwaubenon High School began its interscholastic program in the winter of 1967 when it joined the Northeastern Wisconsin Conference. Our affiliation with that conference continued until 1970 when the Bay Conference was formed. Ashwaubenon maintained its affiliation with the Bay Conference through the 2006-2007 school year.

Ashwaubenon High School is affiliated with the Fox River Classic Conference. The other schools in the conference are: Bay Port, De Pere (East), Green Bay Preble, Green Bay Southwest, Manitowoc, Notre Dame Academy, Pulaski, Sheboygan North and Sheboygan South.

## **A. REQUIREMENTS FOR ATHLETIC PARTICIPATION**

### **1. Athletic Physical Exam Forms**

A physical examination taken April 1 and thereafter is valid for the remainder of that school year and the following two school years. A physical examination taken before April 1 is valid only for the remainder of that school year and the following school year.

Each school year, before a student can participate in athletics, they must have on file in the office a current Athletic Physical Exam form and complete the online Sports Registration process. Student managers and student trainers are only required to have a Co-Curricular Code verification form.

### **2. Insurance Coverage**

All prospective athletes must have insurance coverage. The insurance carrier, address and policy numbers must be indicated on the WIAA physical form and in the online emergency contact information. The School District does not furnish accident insurance covering student injuries received in class or activity participation. Parents are responsible for carrying insurance coverage on their students.

### **3. Co-Curricular Code of Conduct: Meeting and Online Requirements**

All freshmen and new/transfer students participating in athletic activities must attend a Co-Curricular Code Meeting with a parent or guardian prior to athletic involvement. At the end of the meeting, a verification form of meeting attendance must be signed by the student and parent/guardian. Returning 10-12 grade student athletes who have already attended a Co-Curricular Code Meeting in prior years, will NOT be required to attend another meeting during their upper-class years at AHS. However, these upper-class students and parents are still required to complete the Code of Conduct and Parent Consent forms each year via the online Sports Registration process. Freshman student athletes and parents are also required to complete the online Sports Registration process. This is located at [www.ashwaubenon.k12.wi.us](http://www.ashwaubenon.k12.wi.us) on the Athletics page. There are five dates available throughout the school year to attend a Co-curricular Code meeting.

### **4. Emergency Contact Information**

All parents or guardians of athletes must complete and update emergency medical information for their child each year via the online Sports Registration process. Parents' electronic signatures grant permission to our coaches to authorize medical treatment in the event that a parent or guardian is not available. Parents should also list any medical history that may be of value to medical personnel that will be treating the athlete. In the past this information has proven to be a valuable tool in ensuring that our athletes receive prompt medical attention. **Our AHS coaches will have access to this medical and contact information in case of an emergency.**

### **5. Student Activity Fees**

Students who have chosen to participate in high school activities will be assessed a fee for their participation. There is a two-tiered system: a one-time annual fee of \$35.00 for all activities that provide transportation (athletics, forensics) or a one-time annual fee of \$25.00 for all other co-curricular activities. There will be a \$75.00 maximum fee per family in the district.

Details of the activity fees will be provided at the organizational meetings for each sport/club, along with the Co-Curricular Code Meetings held before each season. Any other questions regarding the activity fee should be directed to the Ashwaubenon School District office.

### **6. Medical Release**

In the event any of our student athletes are treated by a physician or emergency room personnel for any athletic related injury, it is mandatory that we have a note from a doctor releasing that student athlete for further competition. We ask for your cooperation in this matter, since we feel that it is extremely important that athletes do not participate if a doctor feels that he or she is not adequately recovered from such an athletic injury.

### **7. Transportation to And from Athletic Contests**

All of our athletes must use the transportation provided by our school district in going and returning from all contests and scrimmages that are conducted away from our facilities. This rule applies to all students involved in our interscholastic athletic program, including managers.

At times student-athletes and parents will be responsible for transportation to home events during the school day. Home events are not always located at Ashwaubenon High School.

If parents want their son or daughter to travel to or from a contest in a different manner, they must submit that request in writing via a Transportation Release form to their coach prior to making that trip. If parents decide on the spur of the moment that they want their son or daughter to travel home with them following a contest, they will be required to sign a Transportation Release form that our coaches will have available with them at the game site. The Transportation Release forms are also available in the Main Office.

#### **8. Student Responsibility for Loss of School Time**

There are times in the course of our interscholastic program that our student athletes may have to miss class time. If this is the case, the student is responsible to contact the teacher or teachers involved and make up all work.

#### **9. Attendance Requirement**

No athlete will be allowed to practice or participate in a contest if she or he has not been in attendance the second half of any school day because of illness. For example, a student may miss their morning classes due to a temporary illness and still be able to participate and practice for a contest that afternoon or evening if they are present for the beginning of Period 3 or 11:10 a.m. If an athlete is not in attendance by 11:10 a.m., he or she **will not** be eligible to participate. The only exceptions to this rule would be an absence due to funerals, doctors' appointments or some other legitimate excuse. The reason for this rule is that we do not want to jeopardize our athlete's health by asking him or her to participate when not in good health. **An athlete who is truant for any part of a school day will not be allowed to practice and will not be able to participate in the next scheduled athletic contest.**

#### **10. Uniforms**

Parents/students of our athletes are asked to launder all school uniforms and equipment issued to them and to maintain them in a good state of repair. **Any equipment that is issued to an athlete and is subsequently lost will have to be paid for by the student athlete.** If parents have any questions concerning the proper care of the uniforms issued to their athletes, they can get the necessary information from the Activities Director. We ask that bleach not be used in the laundering of uniforms.

#### **11. In-Season Activity**

It is the philosophy of the WIAA that a student owes loyalty and allegiance to the school and team of which they are a member during the season of a given sport. Athletes may compete in not more than two non-school competitions with school approval during each regular sport season. The contests(s) will not count against the individual maximum for the athlete in that sport. Non School competition will not be allowed during the respective WIAA tournament series in a sport. A student becomes ineligible in a sport for the remainder of the season for competing in more than two non-school games, meets, or contests in the same sport during the season of practice and competition established by the school. The penalty may be reduced, with the forfeiture of the two non-school opportunities, upon request of a school on the basis of documented extenuating circumstances.

#### **12. Amateur Status**

Athletes involved in any interscholastic athletic program may not receive awards other than those which are symbolic in nature, for example, trophies, plaques or certificates. Money, merchandise or jewelry may not be accepted by our student athletes. Athletes may, however, accept money or merchandise as prizes for achievement in athletic endeavors that are not recognized by the WIAA as sports. For example, a high school swimmer may accept prize money in a bowling league as the WIAA does not recognize bowling as an interscholastic sport. If athletes or parents have any questions concerning this item, we urge them to contact the Activities Director.

#### **13. School Athletic Awards/Recognition**

Ashwaubenon High School has an extensive athletic awards program. At the varsity level, a student athlete may receive an athletic letter if he or she meets the criteria set down by his or her coach/sport. All of our varsity coaches have established the criteria necessary for receiving an athletic letter. The

criteria in each sport are readily available to the athlete and his or her parents upon request. In most cases, our varsity coaches make the letter criteria well known to their athletes. Athletes performing at the junior varsity and freshman levels will receive certificates upon the completion of their season. All of the awards are sponsored and funded by the Jaguar Backers Booster Club.

Seniors who earn an athletic scholarship to a college or university will have the opportunity to sign their National Letter of Intent at school. Student-athletes will work with the Activities Director/Associate Principal to facilitate the signing. Students must be in good standing and not have a co-curricular violation in the preceding year to have a signing event.

There will be an awards recognition night in the spring where the WIAA successes of Jaguar WIAA athletes will be celebrated. Criteria for being invited are: being a multi-sport varsity athlete, three-sport athlete (does not need to be all at the varsity level), recognized as all-conference in a sport, on a team which has postseason success (regional, sectional and/or state recognition), on a conference championship team, individual state qualification, or winning a senior athletic award.

**To be added to the Ashwaubenon High School Athletic Wall of Honor, you must meet the following criteria:**

- Designated as 1st Team All-State by the WIAA or WACPC.
- 1st Team All-State designation by that sports coach's association.
- Winning a State Championship, runner up, or 3rd place finish in a WIAA individual/relay event/match.
- Earning All-American Honors by a recognized sports association.

#### **14. Team Recognition**

Ashwaubenon High School recognizes conference championships in WIAA athletics with the year placed on the appropriate banner in the fieldhouse. WIAA and WACPC state runner-up and state championship teams will also be recognized with the year placed on the appropriate banner located on the north wall in the fieldhouse. Some WIAA teams may also have banners hung in additional locations (For example, the Swim team). Other club team and activity championships, which reach and win the highest level of competition (state or national competition), will be recognized with a banner placed on the east wall in the fieldhouse and by any additional means that are appropriate for such activity (For example, but not limited to, trophy placed in trophy case, announcements, press releases).

#### **15. State Tournament Appearance**

When our student athletes are fortunate enough to qualify for state tournament participation, our school district provides transportation, food and lodging. Prior to your son or daughter's participation in such a program, you will be provided with a complete itinerary of their activities. All of these appearances are fully chaperoned and very highly organized. Again, we ask that the athletes travel to and from sites only in school-provided transportation. We also require our student athletes to stay in the lodging facilities provided by the school district.

#### **16. State Transportation**

Making it to State is the highest accomplishment. The Activities Director, with input from the head coach, will make the best determination for the mode of travel, taking into consideration cost, ease of use, past practices, number of athletes attending, etc.

#### **17. Meal Money**

The school district provides no meal money for its athletes during the normal sports season. The only exception to this is participation in state level tournaments. There are times when our athletes will be away from home for an extended period of time. For example, our wrestlers may leave early in the morning to participate in an all-day tournament. We ask that the parents either provide a bag lunch for their student athlete or make sure they have enough money available to purchase meals while away from home.

#### **18. Towels**

Athletes are asked to provide their own towels from home.

## **19. Student Athletes Experiencing Financial Difficulty**

Any potential athlete in our school district who would like to participate and is not able to for financial reasons should contact the Activities Director or High School Principal. At no time do we want a potential athlete to be denied the opportunity to participate because she or he could not afford the cost of a physical, the cost of insurance or because they were not able to purchase a required piece of athletic equipment or apparel. In the past, we have been able to provide for student athletes in these situations by appealing to local service clubs and other organizations. Additionally, the high school administration has a limited amount of funds available to aid students in these kinds of situations. If any of you know of any potential athlete who is not participating because of financial reasons, please encourage him or her to contact us. All of these matters will be held in strict confidence.

## **20. WIAA Eligibility Criteria**

Our school is a member of the Wisconsin Interscholastic Athletic Association, and the rules and regulations of the WIAA govern both your participation in high school athletics and your sports activity outside of school. Visit [www.wiaawi.org](http://www.wiaawi.org) for complete eligibility information. Contact your Principal, Activities Director, or Coach for further details.

# **IX.CO-CURRICULAR CODE OF CONDUCT**

## **A. INTRODUCTION**

### **Statement of Principle**

The Ashwaubenon School District believes co-curricular activities are an integral part of the total educational process. Through participation in these opportunities, students can have experiences and training in activities not ordinarily obtainable in the general curriculum. The student who complies with this Code of Conduct demonstrates a desire to dedicate herself/himself to self-improvement, and a commitment to high personal standards, as well as to enhance the best interests of teammates, coaches/advisors and the school. As such, all participants must abide by all rules and responsibilities at all times (24 hours a day/365 days per year) in order to continue participating in co-curricular activities. The Board of Education reserves the right to change or revise this code at any time.

### **Publication**

This Code shall be part of the materials provided to students by school administration/coaches/advisors and will remain on file with the Ashwaubenon School District School Board. The Code will be available online at [www.ashwaubenon.k12.wi.us](http://www.ashwaubenon.k12.wi.us) and in the high school office.

### **Receipt of Student/Parent Handbook**

This Student/Parent Handbook is provided to every student at Ashwaubenon High School via PowerSchool's E-Registration and on the Ashwaubenon High School website. By electronic receipt of this handbook, parents and students agree to abide by the rules contained within. Furthermore:

Group I Athletics - participants must sign a form indicating they have received the Code of Conduct prior to participating in athletics.

Group II Activities – Each advisor of a Group II activity is required to discuss the Co-Curricular Code with their participants.

## **B. PARTICIPATION REQUIREMENTS**

### **Sport/Activity Groupings**

For the purpose of disciplinary procedures, this code is divided into two Groups (I & II) of sports/activities in which students may be involved. Because of the two Groups' differences (i.e. competitions vs. service, number of contests, clearly defined seasons, etc.), the penalties for violation of school district policies and rules vary depending on whether the student is in a Group I or II activity.

**GROUP I ACTIVITIES:** Refers to all WIAA Sports, Cheerleading, and Dance Team

Baseball	Football	Swimming (boys and girls)
Basketball (boys and girls)	Golf (boys and girls)	Tennis (boys and girls)
Cheer & Stunt Mascot Team	Hockey (boys and girls)	Track and Field (boys and girls)
Cross Country (boys and girls)	Soccer (boys and girls)	Volleyball
Dance Team	Softball	Wrestling

**GROUP II ACTIVITIES:** Refers to all Co-Curricular Activities not mentioned in Group I

*\*Note: A student with a code violation is ineligible for the next dance court.*

Academic Games	Encore Show Choir	Musical Program	Spanish Club
Art Club	Fishing Club	National Honor Society	Spring Play
Battle of the Books	Forensics Team	Nordic Ski Team	STING Cancer
Bowling Team	Formula Student USA	One-Act Play	Student Council
Computer Club	German Club	Performing Arts Club	Trap Shooting Club
DECA	GSA	PAC Technical Staff	Yearbook Staff
Destination Imagination	Jazz Band II	Pit Band	
ECO Club	Math Team	Skills USA	

**Team Participation**

- Athletes must have a physical by a licensed physician every other year. Each year an athlete must also complete the online sports registration process and update emergency contact information. All information must be submitted to the Activities Office before the student-athlete is allowed to participate.
- New students to the district must submit proper identification records to the Activities Director prior to participation in order to be eligible for athletics.
- Freshman athletes and new student athletes are required to attend one Co-Curricular Code Meeting with a parent their first year at AHS, and also complete the online Sports Registration process. These mandatory meetings are usually held in August, September, October, and Feb/March. Each year thereafter, student-athletes/parents will only need to review the Co-Curricular Code Agreements and verify understanding of the guidelines by electronic signature via the required online Sports Registration process.

**Academic Eligibility**

- Eligibility requirements shall commence upon initial enrollment in the first co-curricular activity/sport.
- A student must satisfy District and DPI requirements defining a full-time student.
- A student must have passed all classes (Incomplete classes shall count as F's until complete).
- GPA requirements are not cumulative.
- A student must have obtained a minimum 1.5 GPA in the most recently completed quarter with no F's. A student whose grade point average falls below a 2.0 GPA in the most recently completed quarter, but higher than a 1.5 GPA will be placed on academic probation and may become academically ineligible, as long as there are no F's.
- Children with disabilities who are enrolled in a state-approved Special Education Program and who receive a failing grade in a course, or who have a GPA which falls below 1.5, may be considered academically eligible to participate as a non-competitor in Group I activities if satisfactory progress is being made in their total school program as documented by an Individual Education Program (IEP).

**Academic Ineligibility**

- A student whose grade point average falls below a 1.5 GPA in the most recently completed quarter is academically ineligible to participate in extracurricular activities. The academic ineligibility will start on the school day grades are final. Grades are final the next school week after the end of quarter.
- Eligibility may be regained after a student demonstrates passing work in all classes after the first fifteen (15) scheduled school days and school nights into the next quarter.
- If after the fifteen-day period a student is still receiving a failing grade(s), the grade(s) will be rechecked after five (5) school days.
- Grades may be checked up to three (3) times following the initial fifteen-day period; if a student is not passing after the third grade check they will be ineligible for the remainder of the quarter.
- An ineligible student cannot participate in any program's contests during the period of ineligibility (students may practice at the discretion of the coach and Activities Director).
- An ineligible student participating in Group II activities will miss 2 performances, or 20% of performances, as determined by the Activities Director and/or HS Associate Principal or Principal.
- Note: For fall sports the ineligibility period will be the lesser of (1), 21 calendar days beginning with the date of the earliest allowed competition in that sport or (2), 1/3 of the maximum number of contests allowed in a sport.
- ***A student must be academically eligible to participate before they may start serving a code violation.***

### **Academic Probation**

- A student, whose grade point average falls below a 2.0 GPA in the most recently completed quarter, but higher than a 1.5 GPA, will be placed on academic probation and may become academically ineligible.
- A student may be eligible on a week-to-week basis based on satisfactory progress in all courses that will be documented through the review by athletic administration, until the student achieves higher than a 2.0 GPA.
  1. If a student is deemed academically ineligible during the course of a quarter, the student will be reinstated to participate in co-curricular activities for one week (Friday to the following Thursday) if the student is performing satisfactorily in each class (higher than a 1.5 GPA) and has no unexcused absences.
  2. The student could become academically ineligible for the next week if the student does not perform satisfactorily in each class (below a 1.5 GPA), or has an unexcused absence during the week.

### **School-Sponsored Trips (Including Foreign Trips)**

School-sponsored trips and trips abroad are an important part of the high school experience, and are considered extensions of the classroom experience. School expectations of behavior, attendance, participation and acceptable/unacceptable activities remain in place. Students who sign up for a trip abroad (including, but not limited to GAPP and Spanish trips) must be in good academic and behavioral standing. In addition to behavior expectations during the trip, the following expectations apply to students planning to participate.

- Students must pass all courses and have a minimum 1.5 GPA for the most recent three quarters prior to the trip, including the current term if the trip takes place during the school year.
- A student may not have any co-curricular code violation or any school offenses rising to the level of suspension during the school year of the trip abroad.
- For students who lose eligibility due to either of the above, any deposits made after the non-refundable dates will be lost.
- For all students planning to travel, fundraised money is not the property of the student or family. It is used to offset the cost of a trip, but is not refundable. Fundraised money not used for any reason may be transferred to a sibling's school fundraising activities, or the money will remain within that program.
- Students must demonstrate acceptable school attendance per Administrator and teacher/advisor expectations. Poor attendance, tardiness, and/or truanancies may result in removal from a trip. Students may not be eligible for refunds if removed for attendance issues.

### **Summer School**



A student may erase ineligibility status related to the last grade-reporting period of the school year through summer school courses (including correspondence courses) at the same or some other school, provided the student successfully completes not less than the same number of courses which caused ineligibility. All courses must be approved by the school counselor and administration. Online courses completed through AHS must be completed by August 1st.

### **Attendance**

- Unless an absence has been pre-arranged (doctor/dental appointment, etc.), a student must be in school by the start of the 3rd hour in order to participate in co-curricular activities that day.
- Deviations from this rule need to be cleared through the Activities Director and/or HS Associate Principal or Principal.
- Habitual tardiness/absence will not be accepted and could constitute disciplinary action including dismissal from the team/activity.
- Athletes are expected to be in school the day after contests. Late bus trips do not justify absences the following day.
- If an athlete has an unexcused absence during the day, s/he will not be able to practice or play on the day the administration becomes aware of the unexcused absence.

### **WIAA**

- Students participating in interscholastic athletics must also abide by the specific rules of eligibility as stipulated by the Wisconsin Interscholastic Athletic Association. ([www.wiaawi.org](http://www.wiaawi.org))

### **Pre-Season Meeting**

- Students and a parent/guardian must electronically sign a form indicating they have received the Code of Conduct prior to participating in athletics (Group I).
- This Student/Parent Handbook is distributed electronically to every student at Ashwaubenon High School. By receipt of this handbook, parents and students agree to abide by the rules contained within. Furthermore:
  - Group I Athletics – participants must sign a form indicating they have received the Code of Conduct prior to participating in athletics.
  - Group II Activities – Each advisor of a Group II activity is required to discuss the Co-Curricular Code with their participants.
- Parents/Guardians and students will attend informational meetings as arranged by the school. One meeting is required per four years of co-curricular participation. There will be three meetings in the fall, one in the winter, and one in the spring, depending on when the student demonstrates an interest in participating in a sport/co-curricular activity.
- Additional standards determined by each coach or advisor shall also be written and distributed to each student.
- Copies shall be placed on file with the Activities Director and/or school Principal.
- Students should read all items and ask for clarification by the coach or advisor of any items not understood.

## **C. EXPECTATIONS**

### **Conduct Violations**

- Students are expected to follow all school rules and to display high standards of behavior, including good sportsmanship, respect for others, and use of appropriate language and dress at all times.
- A student must refrain from any conduct at any time that would reflect unsatisfactorily on him or her or the school.
- Conduct which would reflect unsatisfactorily on a student or on the school includes, but is not limited to, the following:

- Possession, use, sale, transfer, distribution or purchase of any controlled substance/intoxicant or drug paraphernalia. Controlled substances/intoxicants include, but are not limited to: alcoholic beverages (note many non-alcoholic beers do contain alcohol); illegal drugs; mood altering substances; anabolic steroids and other performance enhancing substances; inhalants or facsimiles/look-alikes; prescribed medications used in a manner other than that for which it was prescribed; or non-prescription drugs used in a manner other than that for which they were directed.
- Purchase, use or possession of tobacco products in any form, including e-cigarettes or vaporizers.
- Hosting, sponsoring, organizing or attending a party/gathering at which alcohol or drugs are being used, consumed, or offered.
- A criminal offense or violation of an ordinance, village, city, or state. Generally, this would not include traffic or parking tickets.
- Any civil or criminal infraction including but not limited to theft, willful damage to property, serious misdemeanors or felonies, that is determined by the Activities Director and/or Principal to be a violation of the code or detrimental to or a discredit to the school will result in a suspension as prescribed in the Code of Conduct and at the violation level the student is currently at.
- Vandalism.
- Discrimination, harassment, bullying, hazing, violence, aggression or threatening behavior to others.
- Representation of themselves or others, inappropriately or unlawfully on the internet. This would include blog sites, on-line profiles, instant messaging (Facebook, Snapchat, Instagram, etc.) are examples of certain web-pages or online messaging.
- Any situation or problem that may arise that is not specifically covered above may be reviewed by the high school administration for possible action. Coaches/advisors may adopt appropriate rules and disciplinary action for violations of team/activity rules; however, these rules must not be in conflict with the Co-curricular Code and must be approved by the building administration.

### **Other Misconduct**

- Students, who engage in any acts of willful, persistent, disruptive behavior, or any act in violation of, or subject to, penalty under Wisconsin State Statutes, any local ordinances, and/or Ashwaubenon School District Policies and/or Procedures, shall be subject to discipline as deemed appropriate by the administration, which may include a suspension from all co-curricular activities for a period of time to permanent prohibition from all co-curricular activities.

### **Mere Presence Policy**

- Presence in bars or attendance at parties where drinking of alcoholic beverages or use of alcoholic beverages or use of illegal drugs is occurring is prohibited.
- This rule is not meant to include presence in an establishment that is primarily an eating place or presence in such places with parents.
- This rule is not meant to prevent being employed at such places.
- Presence in places such as golf courses or bowling alleys where alcoholic beverages are served is not prohibited.
- Students should avoid situations where their guilt or innocence is questioned.
- Students are not prohibited from attending weddings, reunions, anniversaries or other ceremonial functions where alcohol is served, but they may not consume alcohol or be in possession of alcoholic beverages even though they have parental permission. Parental permission does not override the provisions of this code.
- If a student is in attendance at a party or gathering, outside of the exceptions noted above, as evidenced by: 1, the student's own admission; 2, a police report; 3, a signed statement from a responsible adult witness (i.e. parent, teacher, coach, etc.) or 4, visual evidence such as a photograph, and it is determined that the student has not consumed any of the substances listed as banned throughout this document, the initial penalty will be eight (8) hours of school or community service for Group I and II. As a second offense, the

penalty would be loss of 25% of contests for Group I Activities and 20 hours of community service for Group II Activities. All school or community service requirements must be served prior to any Group I competition or Group II involvement takes place.

### **Hosting a Party**

- A student who has a gathering at her/his home/property where alcohol or drugs are being used will be given a penalty at the next highest level above the level s/he would normally receive. Example: If a student hosts a party and it is the student's first violation, since the party was at her/his home/property, the student would be given a violation as her/his second offense. NOTE: A student who hosts a party may not use the honesty penalty reduction.

## **D. CONDUCT VIOLATIONS**

### **Consequences and Penalties**

- Failure to abide by established rules shall result in withdrawal of the privilege to participate.
- For any violation, the following guidelines are established setting forth the minimum penalty that shall be imposed.
- **The Ashwaubenon School District expressly reserves the right to impose a penalty it deems appropriate for each individual situation and case.**
- The policies and provisions of Ashwaubenon High School Student Handbook supersede all code penalties.
- A participant suspended or expelled from school shall be barred from participation in co-curricular activities during that period of time. However, if the suspension is a shorter period of time than the co-curricular code dictates, the code penalty shall prevail.
- ***A student must be academically eligible to participate before s/he may start serving a code violation.***

### **Suspension Calculations**

- For Group I activities, the length of the disciplinary period shall be determined from the mathematical equivalent of 25 percent (first violation) or 50 percent (second violation) of the number of scheduled contests (to include the first WIAA playoff contest) rounded up to the nearest whole number.
- If a student is in attendance at a party or gathering, outside of the exceptions noted above, as evidenced by: 1, the student's admission; 2, a police report; 3, a signed statement from a responsible adult witness (i.e. parent, teacher, coach); or 4, visual evidence such as a photograph, and it is determined that the student has not consumed any of the substances listed as banned throughout this document, the initial penalty will be (8) hours of school or community service for Group I and II. As a second offense, the penalty would be loss of 25% of contests for Group I Activities and 20 hours of community service for Group II Activities. All school or community service requirements must be served prior to any Group I competition or Group II involvement takes place.
- The ending date of the disciplinary period shall be the conclusion of the prescribed number of contests and/or period of time as determined above.
- If the suspension is not completed when a season ends, the remainder of the suspension will be served during the next season in which the student participates. For example: If a student is suspended during football (Group I Activity) and serves a suspension of 2 out of 8 games, or 25% of a 50% penalty, then the student must serve the remaining 25% during the next sport (Group I Activity) in which he or she participates.
- If a suspension carries over into the next sport (Group 1 Activity) the penalty served will only be valid if the student completes the season, discouraging students from joining an activity simply to serve a suspension.
- A student with a code violation is ineligible for the next dance court following the violation.

### **Penalty Execution**

- Students will be penalized during the season in which they participate.

- Students in Group I activities who break the Code of Conduct outside of their season will begin a penalty from the first day of their next Group I Activity.
- Students in Group II activities will serve the penalties beginning on the day they are suspended.
- Penalties will carry over into a second Group I Activity or Group II Activity if the suspension is not completed in the original season or from one school year to the next.
- A student with suspension penalties must begin and end their respective season in good standing in order for the suspension to be completed.
- A student who is involved in both a Group I and II activity and is suspended may not necessarily serve the suspension for both activities simultaneously. The Group II suspension will occur immediately as would the Group I suspension if the student is involved in a sport at present. If the infraction is outside their sports season (Group I Activity), the athletic portion of the suspension would begin at the start of the next season.

### GROUP I ACTIVITIES

Students will be suspended from all Group I activities that they are involved in at the time of the violation or their next sport (Group I Activity) season if they are not involved in a sport at the time of the violation.

- A. First Offense
  1. Drug/Alcohol
    - a. Suspension from participation in 25 percent of contests scheduled.\*
  2. Non-Drug/Non-Alcohol
    - a. Suspension from participation in 25 percent of contests scheduled.\*
    - b. Successful completion of requirements of an appropriate remediation as designed by the building administrator.
- B. Second Offense
  1. Drug/Alcohol
    - a. Suspension from participation in 50 percent of contests scheduled.\*
    - b. Adherence to the Co-Curricular Rehabilitation Program.\*\*
  2. Non-Drug/Non-Alcohol
    - a. Suspension from participation in 50 percent of contests scheduled.\*
    - b. Successful completion of requirements of an appropriate remediation as designed by the building administrator.
- C. Third Offense
  1. Student is suspended from all co-curricular activities at Ashwaubenon High School for one calendar year.
  2. Successful completion of requirements of an appropriate remediation as designed by the building administrator.
- D. Fourth Offense
  1. Student is banned from all co-curricular activities at Ashwaubenon High School.

### GROUP II ACTIVITIES

Students will be suspended from all Group II activities that they are involved in at the time of the violation or their next activity (Group II Activity) if they are not involved in an activity at the time of the violation.

- A. First Offense
  1. Drug/Alcohol
    - a. 20 hours of Community\*\*\* and/or School Service\*\*\*\* (BEFORE returning to the activity).
  2. Non-Drug/Non-Alcohol
    - a. 20 hours of Community\*\*\* and/or School Service\*\*\*\* (BEFORE returning to the activity).
    - b. Successful completion of requirements of an appropriate remediation as designed by the building administrator.
- B. Second Offense
  1. Drug/Alcohol

- a. 40 hours of Community\*\*\* and/or School Service\*\*\*\* (BEFORE returning to the activity).
- b. Adherence to the Co-Curricular Rehabilitation Program.\*\*
2. Non-Drug/Non-Alcohol
  - a. 40 hours of Community\*\*\* and/or School Service\*\*\*\* (BEFORE returning to the activity).
  - b. Successful completion of requirements of an appropriate remediation as designed by the building administrator.
- C. Third Offense
  1. Student will be ineligible for participation in any Ashwaubenon High School co-curricular activities for one calendar year.
- D. Fourth Offense
  1. Student will be banned from all co-curricular activities at Ashwaubenon High School.

**\*Scheduled Contests:** Will be defined and determined based on the WIAA game/meet maximums in each school year. The WIAA list of sport events will be available in the Activity Office.

**\*\*Co-Curricular Rehabilitation Program:** Participants and parents, at their own expense, must enroll and complete a two-step evaluation process in a program licensed and certified by the State of Wisconsin and accredited by the Joint Commission for Accreditation of Healthcare Organizations and approved by AHS. Upon completion, the evaluation must be made available to the AD/Principal in writing. In addition, proof of enrollment and completion of any and all recommendations from this evaluation must also be made available to the school.

**\*\*\*Community Service:** Community service shall be defined as volunteer hours for a recognized service organization such as a student's church, the YMCA, Paul's Pantry, Goodwill, the Boys & Girls Club, and the Humane Society. Other acceptable hours could be garnered from "for profit" organizations which engage in service-related activities. For example, a student could help out at an assisted living center, a special needs facility, etc. It is required that all students specify the activity to school administration prior to performing community service so that the service hours can be approved and accepted as a fulfillment of this requirement.

**\*\*\*\*School Service:** School service shall be determined as service to the school outside the student's regular school day. Due to safety laws and labor requirements, it should not be assumed that the school can provide any manual labor opportunities. A student, purely at their own volition, may ask teachers, primarily of elementary grades, if there would be any service that the student could provide and assist in their classroom. All such assignments must be approved by high school administration prior to the service performances.

## **E. OTHER CONSEQUENCES FOR VIOLATIONS**

### **Severity Clause**

- Any student who supplies alcoholic beverages, controlled substances, and/or unlawfully possesses or uses of a weapon may receive at least a one-year suspension from participation in co-curricular activities.

### **Penalties are Cumulative**

- Penalties are cumulative over a student's high school career.
- A student may, however, be returned to a first violation status upon being free of all penalties for a period of two years. A student must have a clean record for two consecutive years before another violation is considered their first violation. For example, a student violating the code for the first time at the start of her/his freshman year would start with a clean slate at the start of her/his junior year provided s/he has no further violations prior to her/his junior year.

### **Additional Penalty Information**

- ***The penalties listed are the minimum penalties that will be enforced.***
- The Ashwaubenon School District expressly reserves the right to impose a penalty it deems appropriate for each individual situation and case.

- Additionally, during a period of suspension, the student may be required to attend all practices and team/group functions to maintain their status as a team/group member, as determined by the coach/advisor.
- A violation for activities with a limited schedule of events could result in exclusion from that activity.

#### **Simultaneous Group I/Group II Consequences**

- Students may participate in simultaneous activities; however, if a student incurs a violation, s/he will be penalized according to the Code for both activities (Ex: Football and DECA).

#### **Special Awards Restriction**

- Students who violate the Code will be ineligible for any special awards during the season of participation or any season in which the suspension is served. No student with a code violation may be nominated for any special end of season award. This shall include MVP, MIP, captain, all conference, all area, and all state.
- Students who violate the Code will be ineligible for any school sponsored scholarship signing privileges or activities, including but not limited to press releases and the use of school facilities.

#### **Honesty Penalty Reduction**

- Students in Group I&II activities who turn themselves in to school authorities and/or their **head** coach or advisor, prior to the school obtaining **any information**, and who do not attempt to deceive or mislead school officials, shall receive an initial penalty of half of what the normal consequence would be for a first offense in Group I activities and/or half of the hours of school or community service for Group II activities.
- ***Any student involved in a co-curricular code violation for which there is a police report or involvement of a police department may not self-refer under this honesty reduction.***
- A student will receive this penalty reduction only once during her/his high school career and it must be used in connection with the ***first violation during the student's high school career. (Note: The honesty reduction may not be used to reduce a violation following the two-year no violation clause described above.)***

### **F. PROCEDURES**

#### **Process for Determining Violation of Rules**

- Any complaint/referral concerning a violation shall be made in writing and signed by an adult who is not a student at Ashwaubenon High School and/or by communication with the Police-School Liaison Officer and/or by a police report and/or by a published newspaper account to the Building Principal, Activities Director or their designee.
- The Activities Director or High School Administration shall investigate the referral and give the student involved an opportunity to present a response.
- If it is determined that a student in question did commit a violation, the student will be orally notified of the determination and penalty, and written notification will be mailed to the home address.
- Suspension takes effect at the time that the oral notification is given to the student or written notification is mailed to her/his address of record, whichever is first.
- School administration will inform the parents/guardian of the decision.

### **G. APPEALS PROCESS**

#### **Right to Appeal**

- Any student who has been suspended from participating in a sport or activity by the Activities Director or High School Administration as a result of a Code violation has the right to appeal the penalty and/or the violation.
- All students who have been suspended from participation because of a Code violation will not be allowed to participate in Group I or II competitions/performances until a final disposition of the appeals process.

#### **Step 1:**

1. The student and her/his parent(s)/guardian(s) will have 11 business days, from the time the Activities Director/High School Administration sends the student the suspension letter, to appeal to the Principal

and to state in writing the reason(s) why s/he believes the penalty is too severe or that s/he is not guilty of any violation.

2. The Principal shall render a decision, in writing, within five business days after a meeting with the student and her/his parent(s)/guardian(s).

Step II:

1. If the student and her/his parent(s)/guardian(s) are not satisfied with the Principal's decision, they can appeal the decision to the School District Superintendent within 10 business days of the Principal's decision.
2. The student shall submit written rationale to the School District Superintendent stating her/his case.
3. The School District Superintendent shall meet with the student and her/his parent(s)/guardian(s). Within five business days after this hearing, the School District Administrator/Superintendent shall render a decision.

Step III:

1. If the student and her/his parent(s) or guardian(s) are not satisfied with the District Administrator's/Superintendent's decision, they can appeal the decision to the School Board within 10 business days of the Superintendent's decision.
2. The student shall submit written rationale to the School Board stating her/his case.
3. The School Board shall meet with the student and her/his parent(s) and/or guardian(s) as soon as the body can be assembled (not to exceed 20 business days).
4. After the meeting, the School Board will render a decision within five business days. The decision of the School Board shall be binding on all parties involved.

*(See next page for Consequences of Code Violations)*

## H. CONSEQUENCES OF CODE VIOLATIONS

Consequences of Code Violations	Offense	Group I	Group II
<b>Drug/Alcohol Offense Use/Possession</b>	<b>1<sup>st</sup></b>	Suspension from 25% of contests in season*	20 hours community service
	<b>2<sup>nd</sup></b>	Suspension from 50% of contests in season*	40 hours of community service
	<b>3<sup>rd</sup></b>	Suspension for one calendar year from all co-curricular activities at AHS*	Suspension for calendar year from all co-curricular activities at AHS
	<b>4<sup>th</sup></b>	Banned from all co-curricular activities at Ashwaubenon High School*	Banned from all co-curricular activities at AHS
<b>Hosting a Drug/Alcohol Party</b>	<b>1<sup>st</sup></b>	Suspension from 50% of contests in season*	40 hours community service
	<b>2<sup>nd</sup></b>	Suspension from 100% of contests in season*	80 hours of community service
	<b>3<sup>rd</sup></b>	Suspension for one calendar year from all co-curricular activities at AHS*	Suspension for calendar year from all co-curricular activities at AHS
	<b>4<sup>th</sup></b>	Banned from all co-curricular activities at Ashwaubenon High School*	Banned from all co-curricular activities at AHS
<b>Attendance at Drug/Alcohol Party</b>	<b>1<sup>st</sup></b>	8 hours of community service	8 hours of community service
	<b>2<sup>nd</sup></b>	Suspension from 25% of contests in season*	20 hours community service
	<b>3<sup>rd</sup></b>	Suspension from 50% of contests in season*	40 hours of community service
	<b>4<sup>th</sup></b>	Suspension for one calendar year from all co-curricular activities at AHS*	Suspension for calendar year from all co-curricular activities at AHS
<b>Tobacco</b>	<b>1<sup>st</sup></b>	Suspension from 25% of contests in season*	20 hours community service
	<b>2<sup>nd</sup></b>	Suspension from 50% of contests in season*	40 hours of community service
	<b>3<sup>rd</sup></b>	Suspension for one calendar year from all co-curricular activities at AHS*	Suspension for calendar year from all co-curricular activities at AHS
	<b>4<sup>th</sup></b>	Banned from all co-curricular activities at Ashwaubenon High School*	Banned from all co-curricular activities at AHS
<b>Theft/Vandalism/ Discrimination/ Violence/Hazing/ Aggression/ Bullying/ Harassment/ Inappropriate Online Activity/</b>	<b>1<sup>st</sup></b>	Suspension from 25% of contests in season*	20 hours community service
	<b>2<sup>nd</sup></b>	Suspension from 50% of contests in season*	40 hours of community service
	<b>3<sup>rd</sup></b>	Suspension for one calendar year from all co-curricular activities at AHS*	Suspension for calendar year from all co-curricular activities at AHS
	<b>4<sup>th</sup></b>	Banned from all co-curricular activities at Ashwaubenon High School*	Banned from all co-curricular activities at AHS
<b>Unexcused Absence</b>	Consequence	No participation in activity on the day the absence is reported	No participation in activity on the day the absence is reported

*\*Penalties will carry over into a 2<sup>nd</sup> sports season (Group I) or co-curricular activity (Group II) if the suspension is not completed in the original season or from one school year to the next.*



### **STUDENT NON-DISCRIMINATION POLICY**

It is the Ashwaubenon School District's policy that no student may be denied admission to any public school in the district or be denied participation in, be denied the benefits of, or be discriminated against in any curricular, extracurricular, student service, recreational or other programs or activities because of the student's sex, race, national origin, ancestry, religion, creed, pregnancy, marital or parental status, sexual orientation or physical, mental, emotional or learning disability or handicap as required by s.118.13 of the Wisconsin Statutes.



*Cover art courtesy of Viewpoints artist, Stuart Mingham,  
[www.art-from-viewpoints.co.uk](http://www.art-from-viewpoints.co.uk)*